

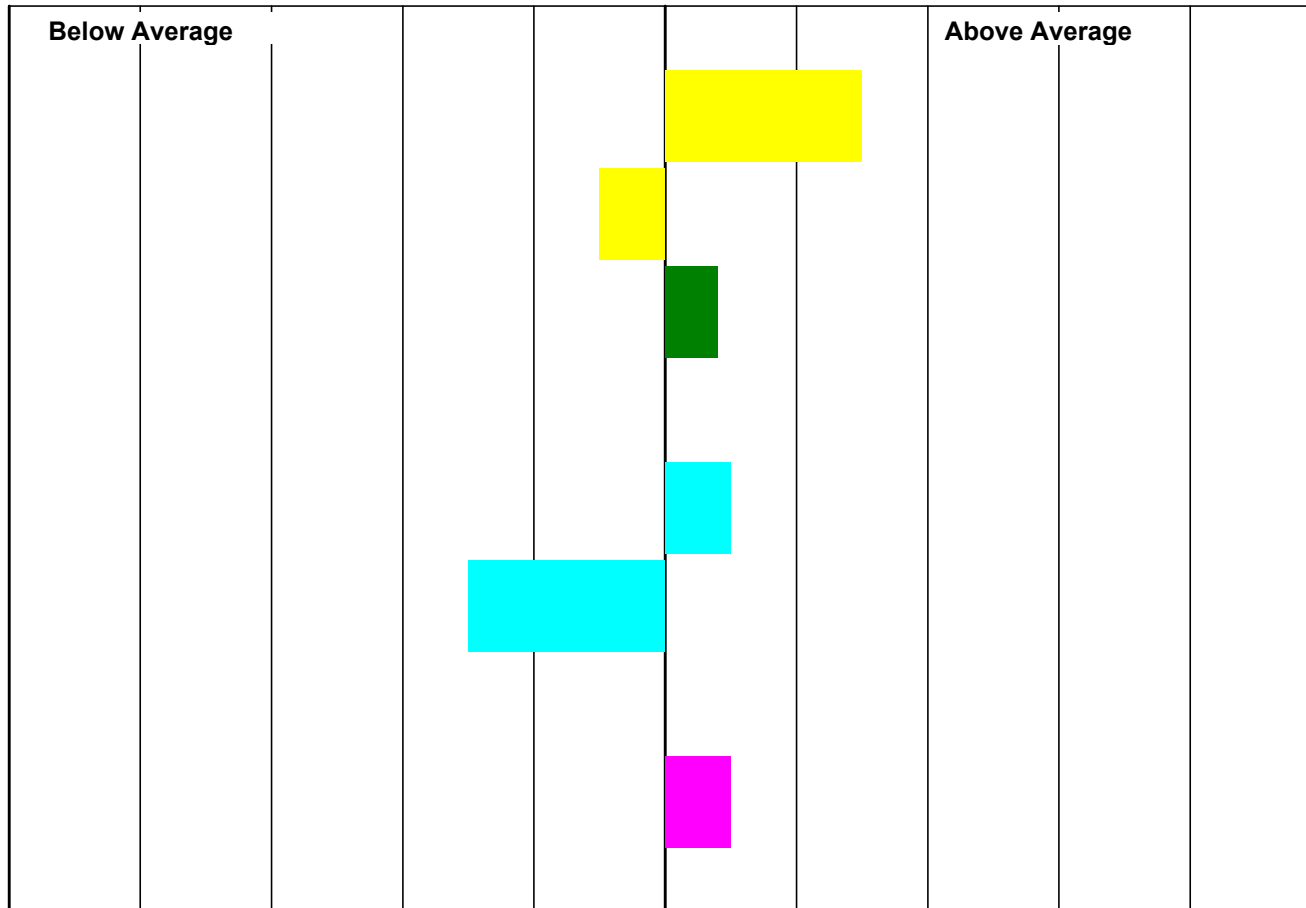
Lot:36 STRATHISLA FNV:13:145

Sire: FORKINS FIGO AOR:11:031

Dam: FNV:N2

Ultrasound Scanned: Yes

Date of Birth 12/01/2013



	EBV	Acc
Litter Size	0.11	28
Mat' Ability	0.02	26
8 Week Wt	4.27	70
Scan Wt	6.94	72
Muscle Depth	2.09	72
Fat Depth	0.49	73
T. Sire Index	£1.93	69
Maternal Index	155	53

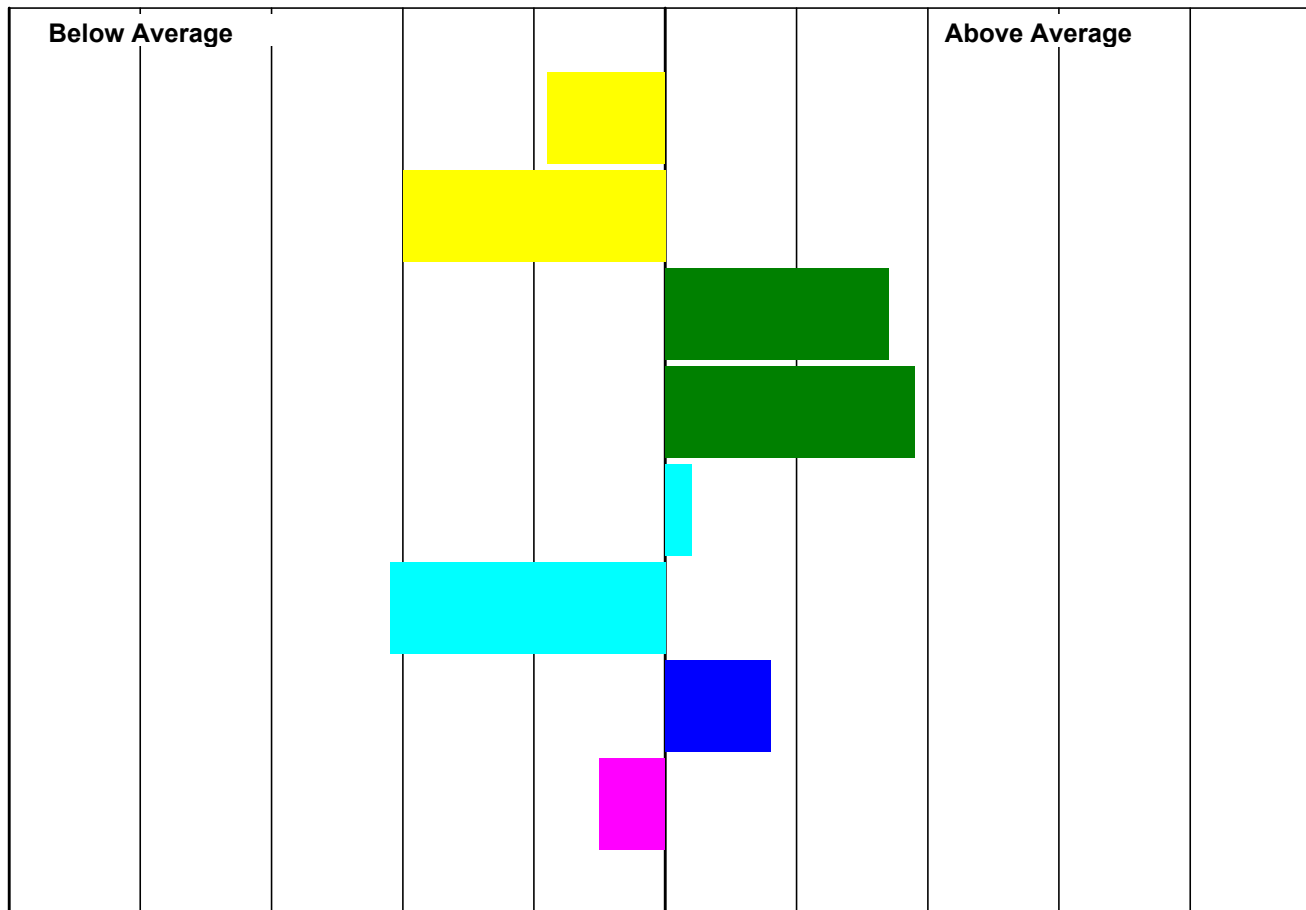
Lot:37 STRATHISLA FNV:13:127

Sire: RHAADR RING-A-DING A12:12:109

Dam: FNV:11:103

Ultrasound Scanned: Yes

Date of Birth 12/01/2013



	EBV	Acc
Litter Size	0.03	25
Mat' Ability	-0.30	23
8 Week Wt	5.54	64
Scan Wt	10.43	67
Muscle Depth	1.75	67
Fat Depth	0.63	69
T. Sire Index	£2.64	63
Maternal Index	119	46

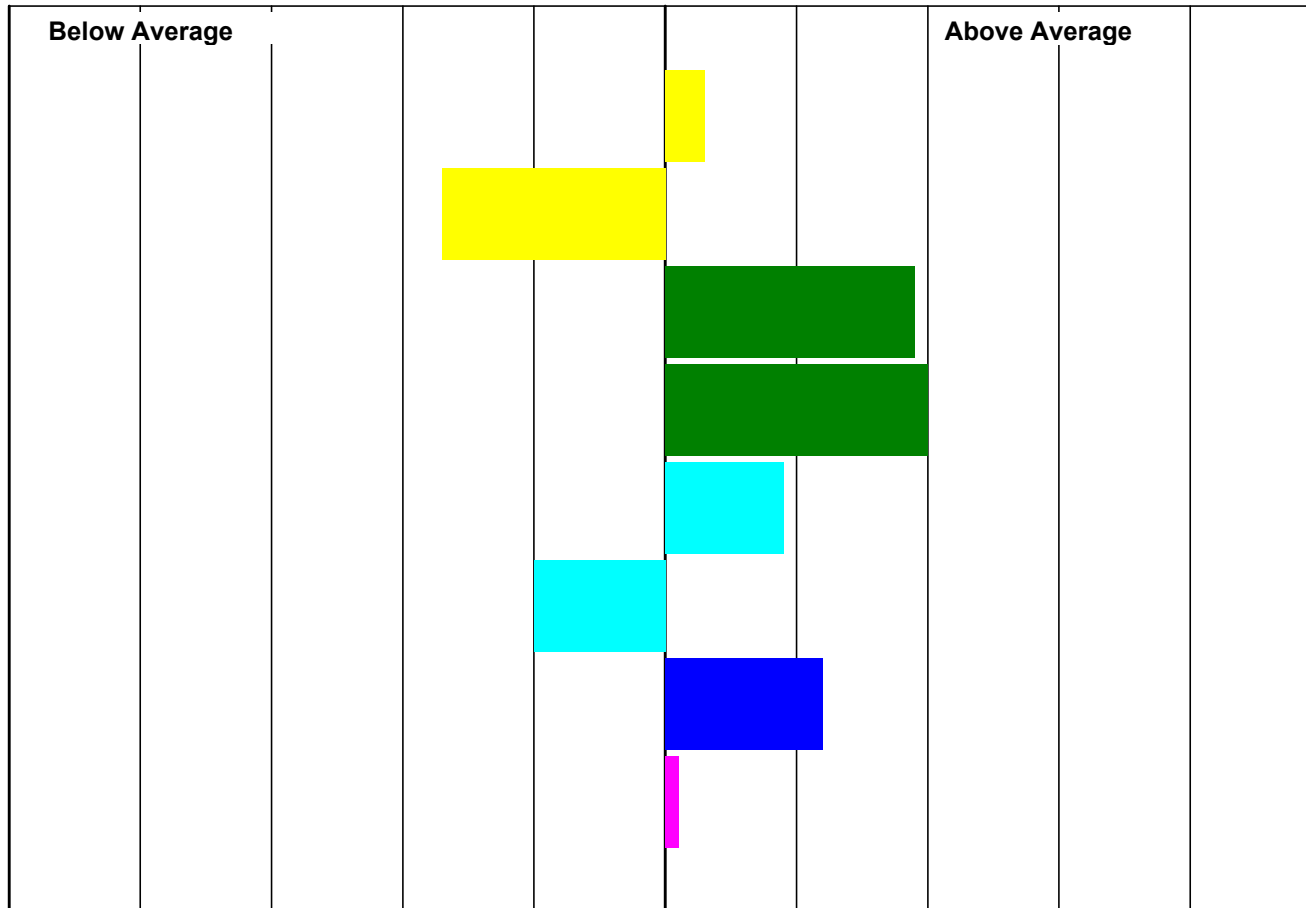
Lot:38 STRATHISLA FNV:13:080

Sire: RHAADR RING-A-DING A12:12:109

Dam: FNV:N112

Ultrasound Scanned: Yes

Date of Birth 10/01/2013



	EBV	Acc
Litter Size	0.07	26
Mat' Ability	-0.30	21
8 Week Wt	5.79	68
Scan Wt	10.60	70
Muscle Depth	2.49	71
Fat Depth	0.37	72
T. Sire Index	£3.05	67
Maternal Index	142	49

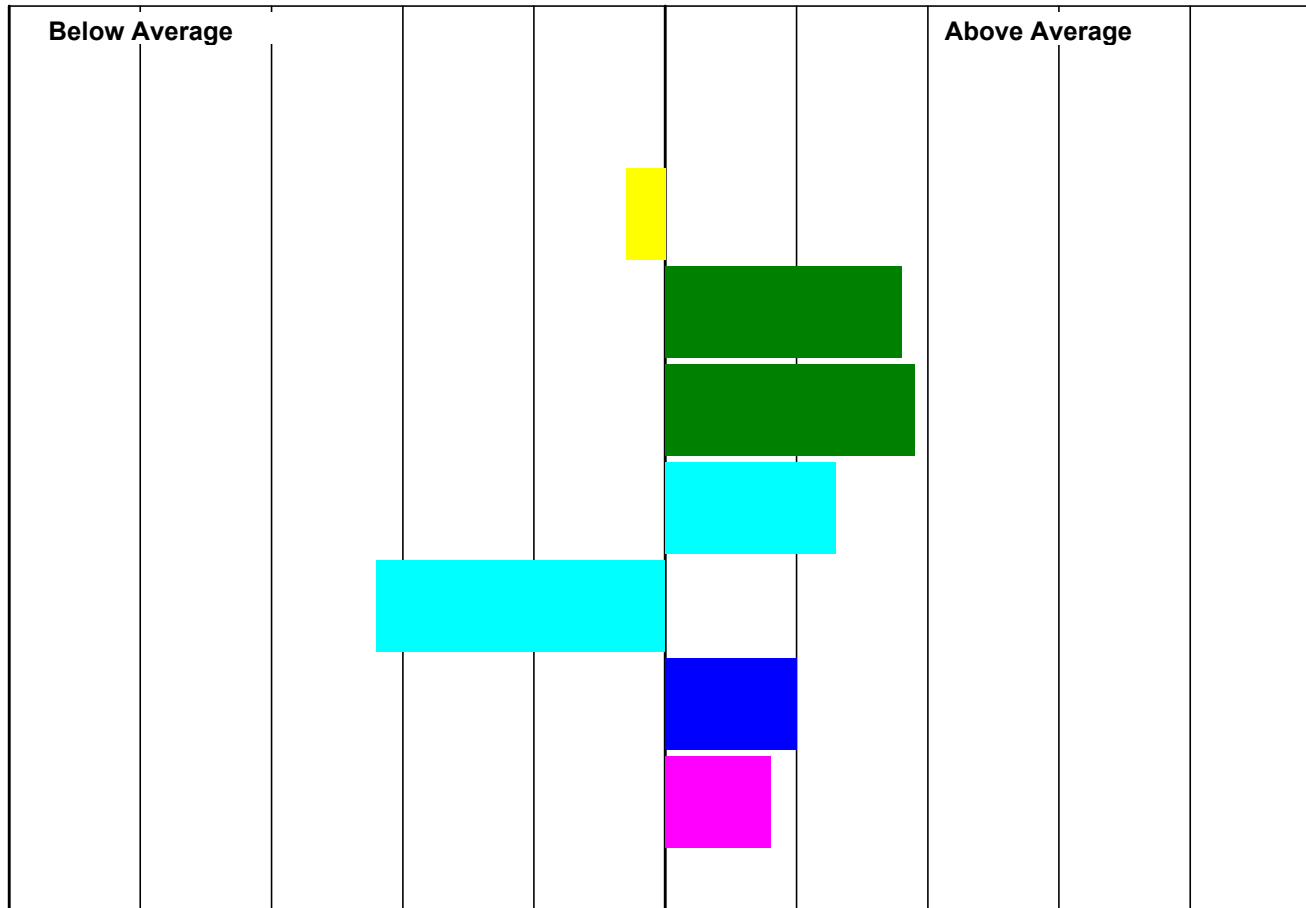
Lot:39 STRATHISLA FNV:13:124

Sire: STRATHISLA STIFLER FNV:12:136

Dam: FNV:J126

Ultrasound Scanned: Yes

Date of Birth 12/01/2013



	EBV	Acc
Litter Size	0.06	30
Mat' Ability	0.07	28
8 Week Wt	5.67	69
Scan Wt	10.47	71
Muscle Depth	2.92	71
Fat Depth	0.67	72
T. Sire Index	£2.84	69
Maternal Index	166	52

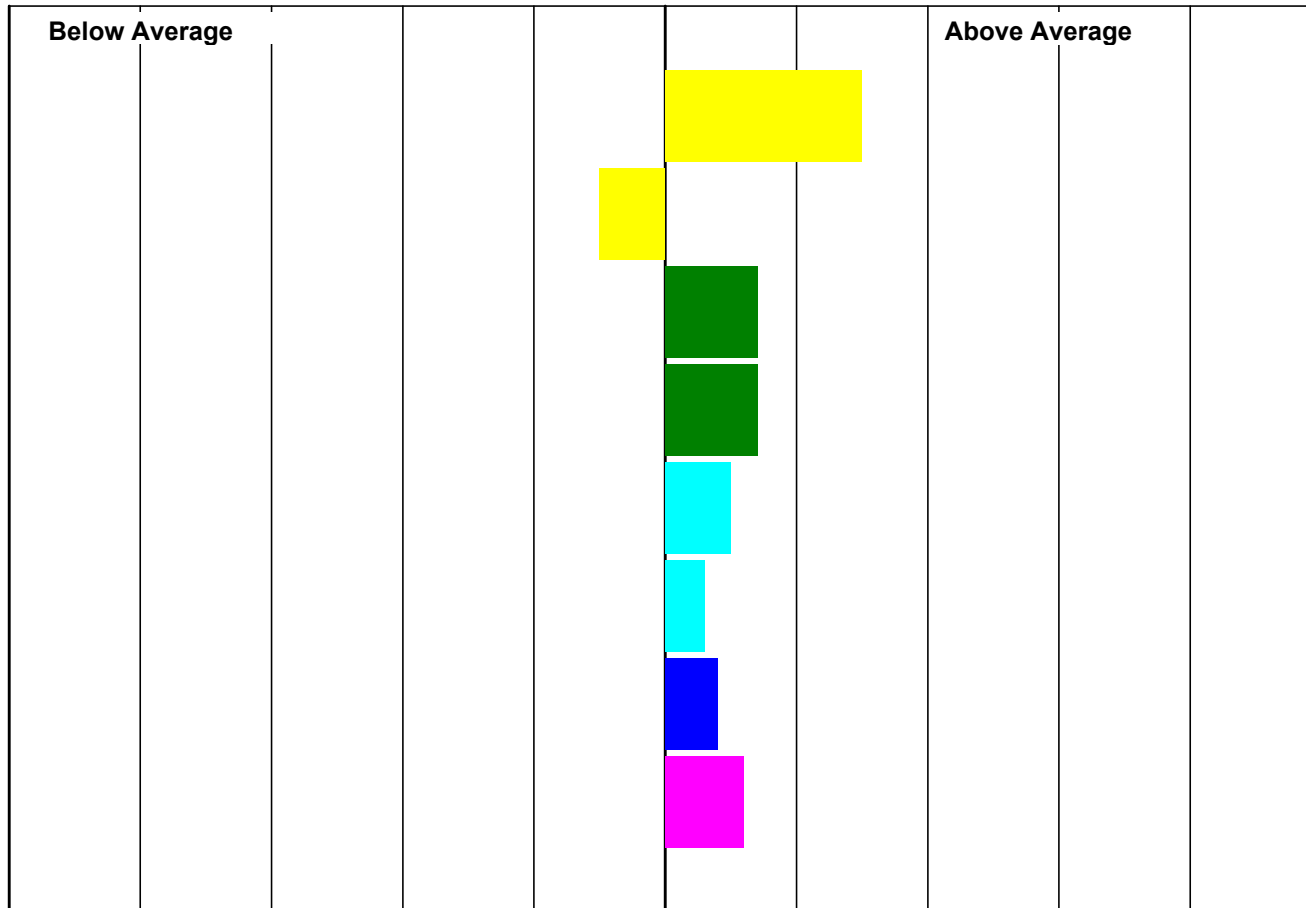
Lot:40 STRATHISLA FNV:13:070

Sire: FORKINS FIGO AOR:11:031

Dam: FNV:N2

Ultrasound Scanned: Yes

Date of Birth 09/01/2013



	EBV	Acc
Litter Size	0.11	28
Mat' Ability	0.02	26
8 Week Wt	4.56	70
Scan Wt	8.21	72
Muscle Depth	2.09	72
Fat Depth	0.02	73
T. Sire Index	£2.28	69
Maternal Index	160	53

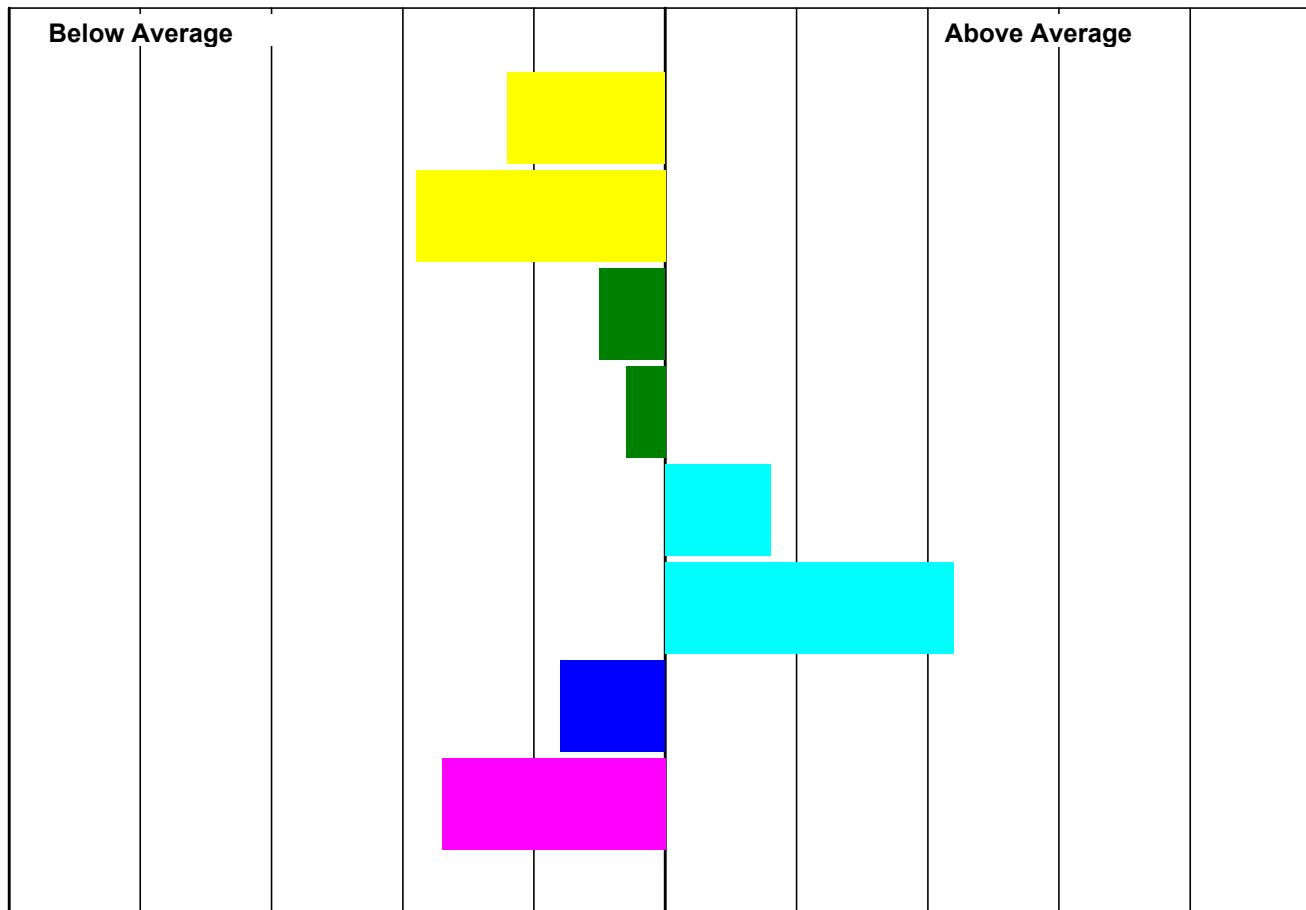
Lot:41 STRATHISLA FNV:13:025

Sire: RHAADR RING-A-DING A12:12:109

Dam: FNV:L23

Ultrasound Scanned: Yes

Date of Birth 08/01/2013



	EBV	Acc
Litter Size	0.02	22
Mat' Ability	-0.30	19
8 Week Wt	3.44	70
Scan Wt	6.27	71
Muscle Depth	2.41	72
Fat Depth	-0.47	73
T. Sire Index	£1.22	69
Maternal Index	79	50

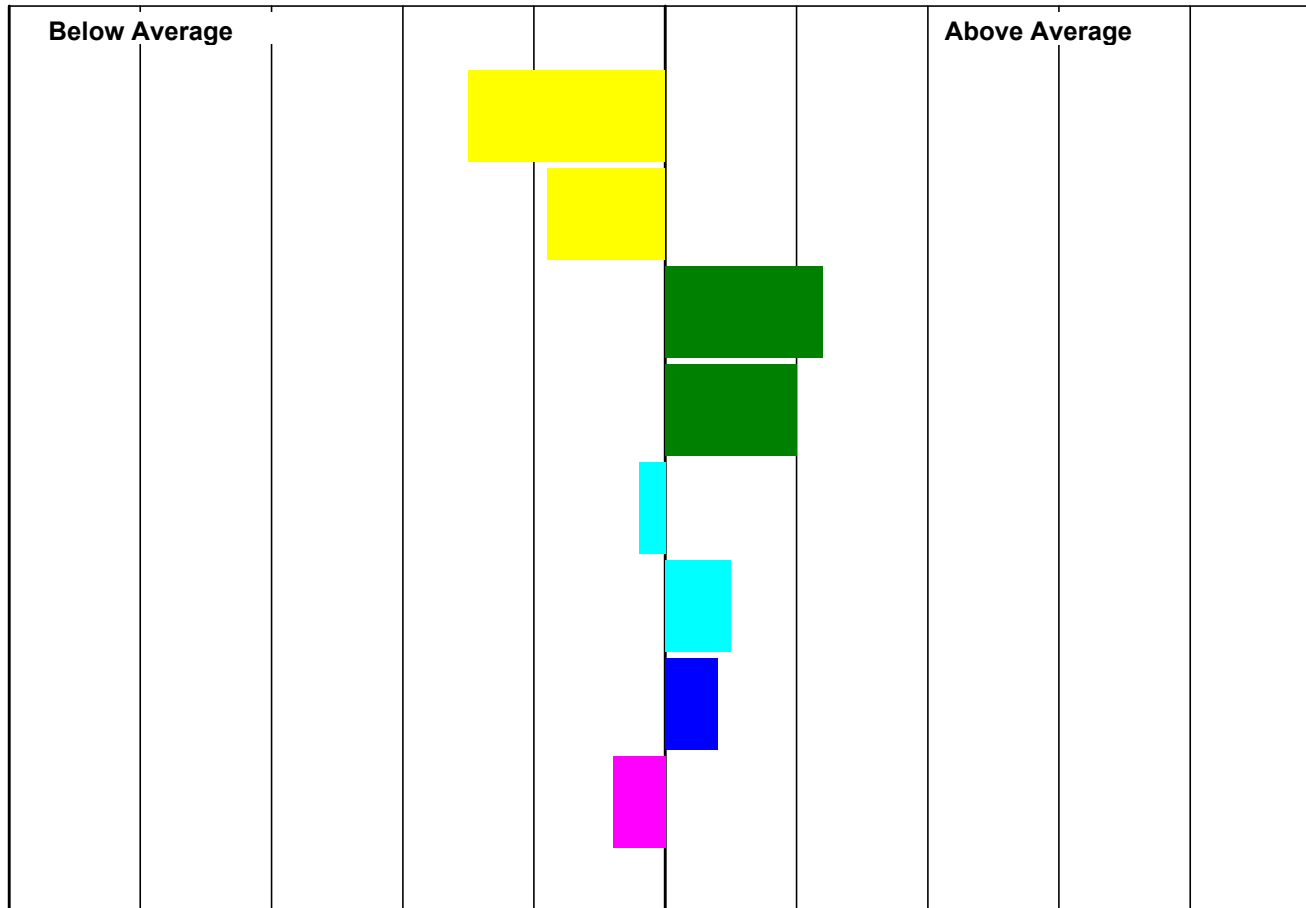
Lot:42 STRATHISLA FNV:13:112

Sire: RHAADR RING-A-DING A12:12:109

Dam: FNV:L56

Ultrasound Scanned: Yes

Date of Birth 11/01/2013



	EBV	Acc
Litter Size	0.01	20
Mat' Ability	-0.10	18
8 Week Wt	5.07	68
Scan Wt	8.75	70
Muscle Depth	1.44	70
Fat Depth	-0.02	72
T. Sire Index	£2.30	67
Maternal Index	123	48

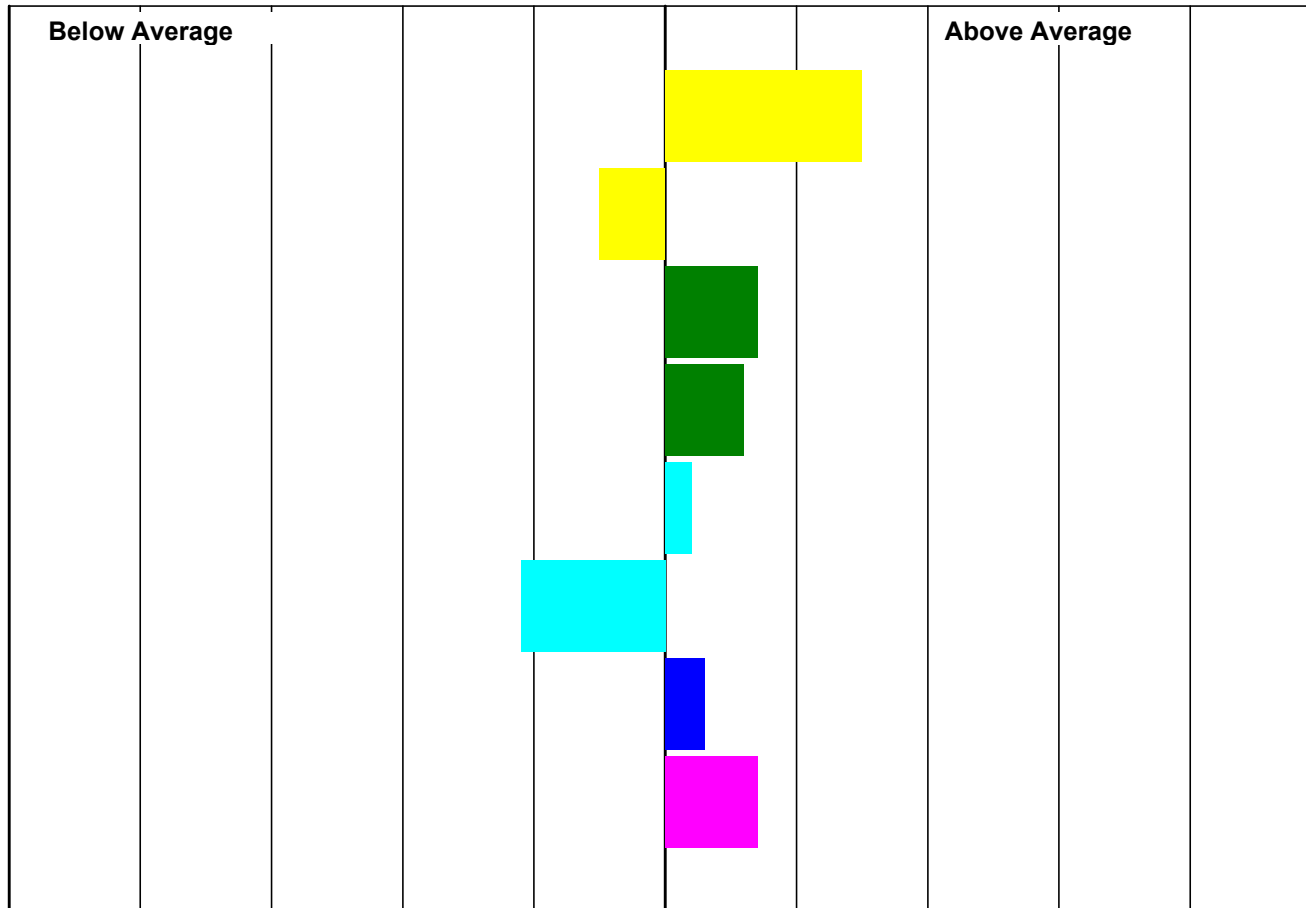
Lot:43 STRATHISLA FNV:13:134

Sire: FORKINS FIGO AOR:11:031

Dam: FNV:N2

Ultrasound Scanned: Yes

Date of Birth 12/01/2013



	EBV	Acc
Litter Size	0.11	28
Mat' Ability	0.02	26
8 Week Wt	4.62	70
Scan Wt	8.02	72
Muscle Depth	1.77	72
Fat Depth	0.38	73
T. Sire Index	£2.19	69
Maternal Index	162	53

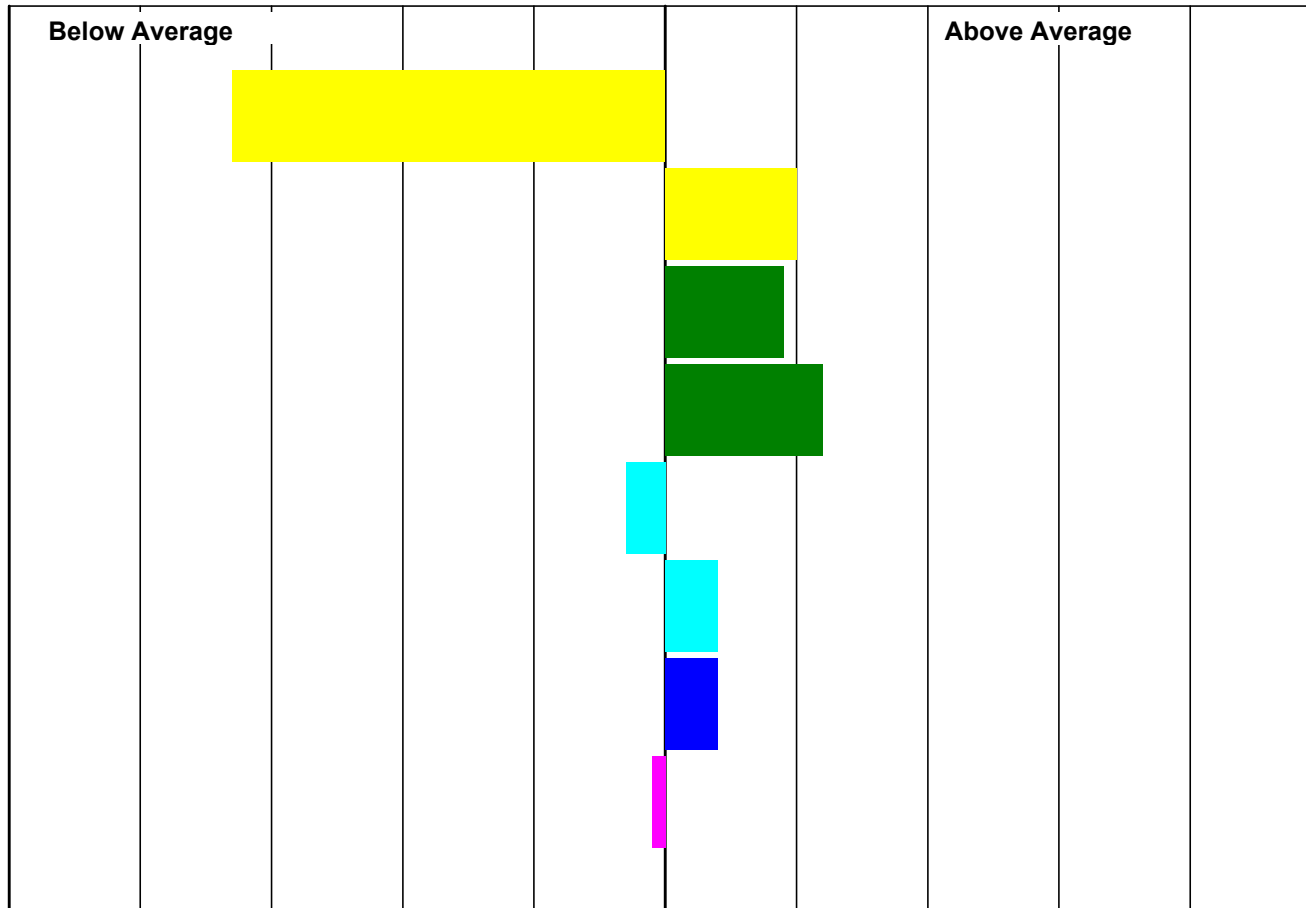
Lot:101 HALLHILL 35N:13:092

Sire: CAIRNESS HOY 33H:12:062

Dam: 35N:H38

Ultrasound Scanned: Yes

Date of Birth 06/01/2013



	EBV	Acc
Litter Size	-0.05	37
Mat' Ability	0.41	35
8 Week Wt	4.74	67
Scan Wt	9.08	70
Muscle Depth	1.31	70
Fat Depth	0.00	71
T. Sire Index	£2.35	67
Maternal Index	135	49

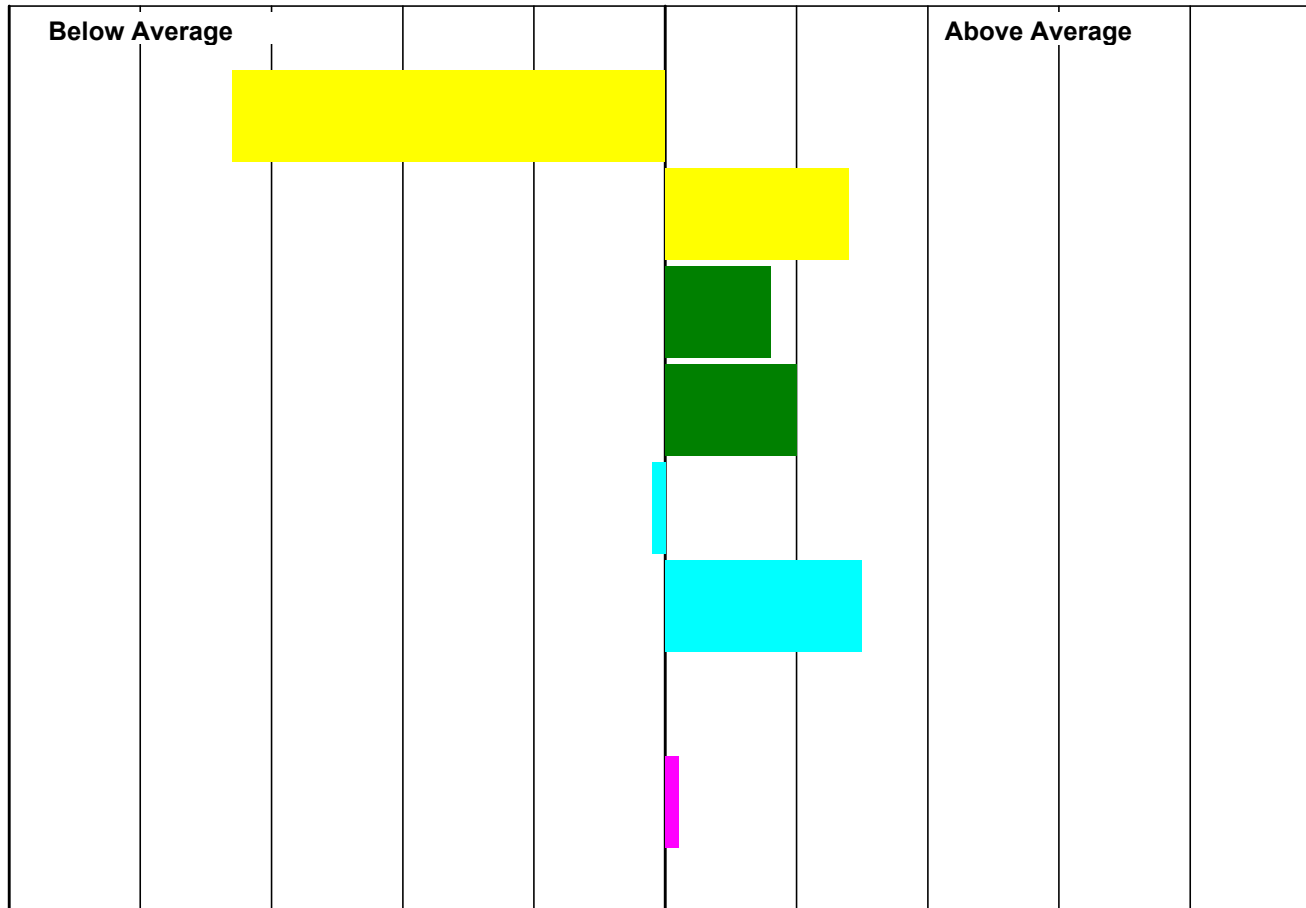
Lot:102 HALLHILL 35N:13:108

Sire: CAIRNESS HOY 33H:12:062

Dam: 35N:N46

Ultrasound Scanned: Yes

Date of Birth 08/01/2013



	EBV	Acc
Litter Size	-0.05	31
Mat' Ability	0.52	28
8 Week Wt	4.71	67
Scan Wt	8.75	69
Muscle Depth	1.48	69
Fat Depth	-0.30	71
T. Sire Index	£1.93	66
Maternal Index	143	45

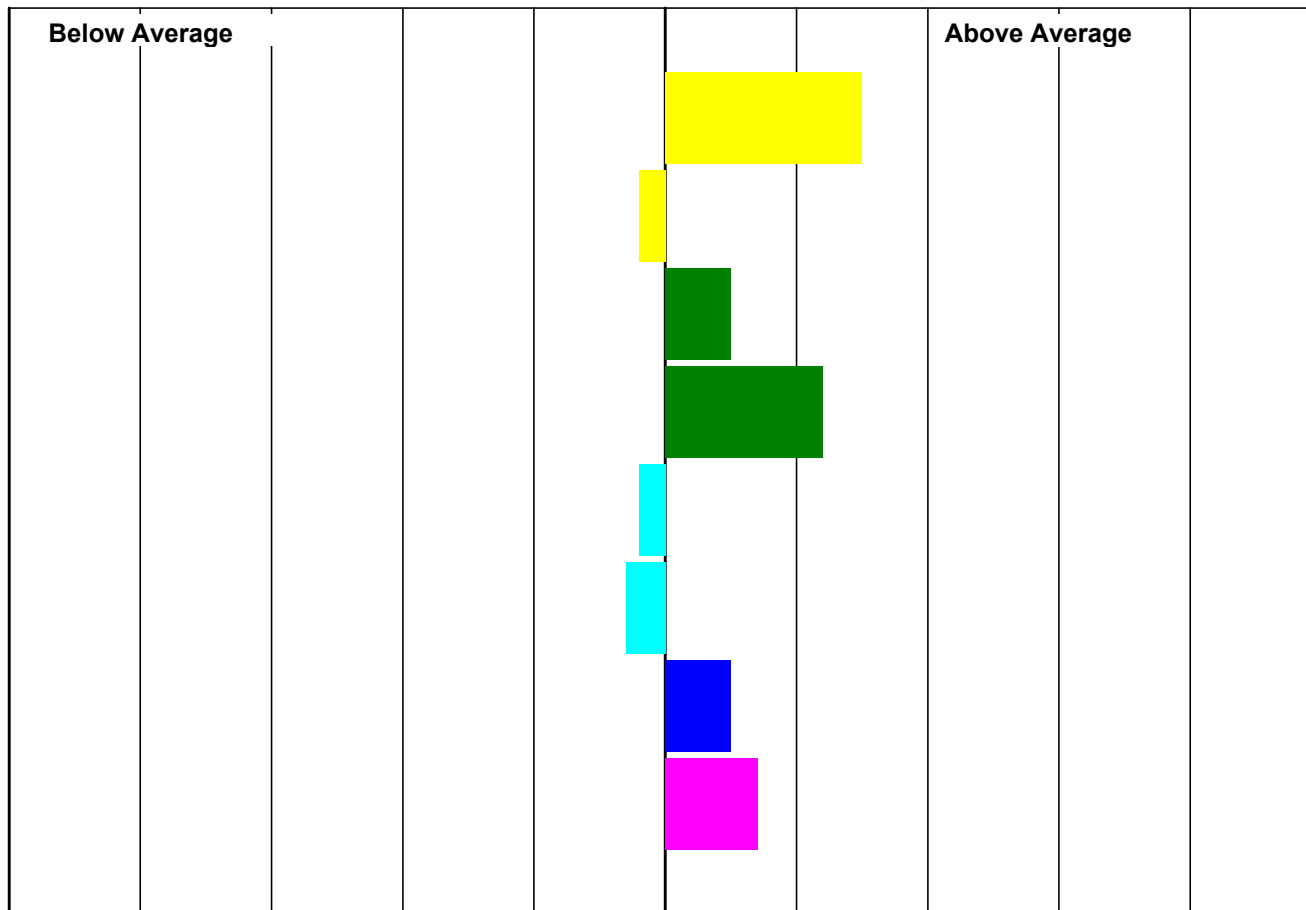
Lot:103 HALLHILL 35N:13:062

Sire: CAIRNESS HOY 33H:12:062

Dam: 35N:L100

Ultrasound Scanned: Yes

Date of Birth 05/01/2013



	EBV	Acc
Litter Size	0.11	32
Mat' Ability	0.08	30
8 Week Wt	4.43	68
Scan Wt	9.02	70
Muscle Depth	1.40	70
Fat Depth	0.18	71
T. Sire Index	£2.40	66
Maternal Index	163	46

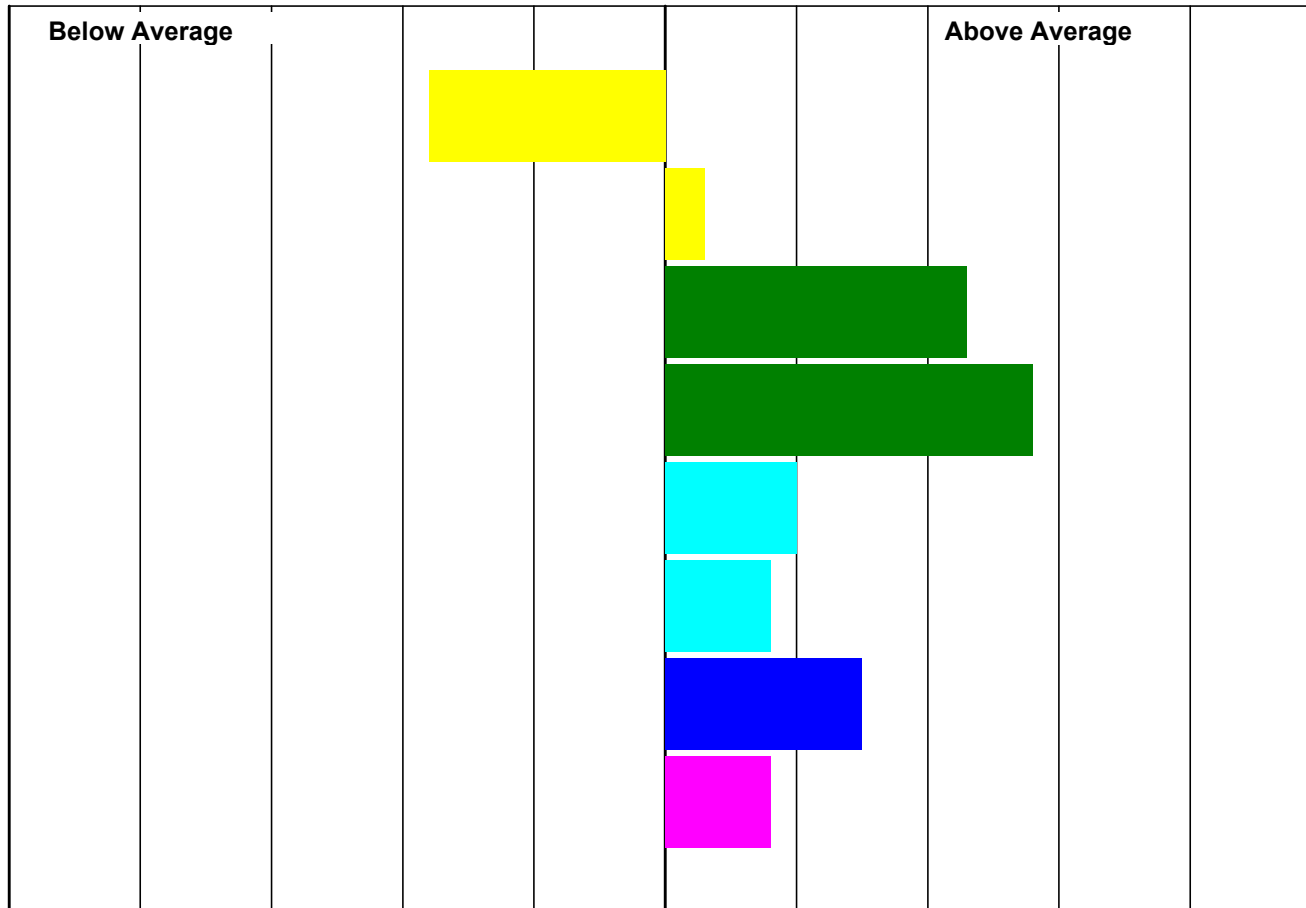
Lot:104 HALLHILL 35N:13:089

Sire: CAIRNESS HOY 33H:12:062

Dam: 35N:L56

Ultrasound Scanned: Yes

Date of Birth 06/01/2013



	EBV	Acc
Litter Size	0.00	33
Mat' Ability	0.23	30
8 Week Wt	6.18	67
Scan Wt	12.03	69
Muscle Depth	2.55	70
Fat Depth	-0.11	71
T. Sire Index	£3.26	66
Maternal Index	166	46

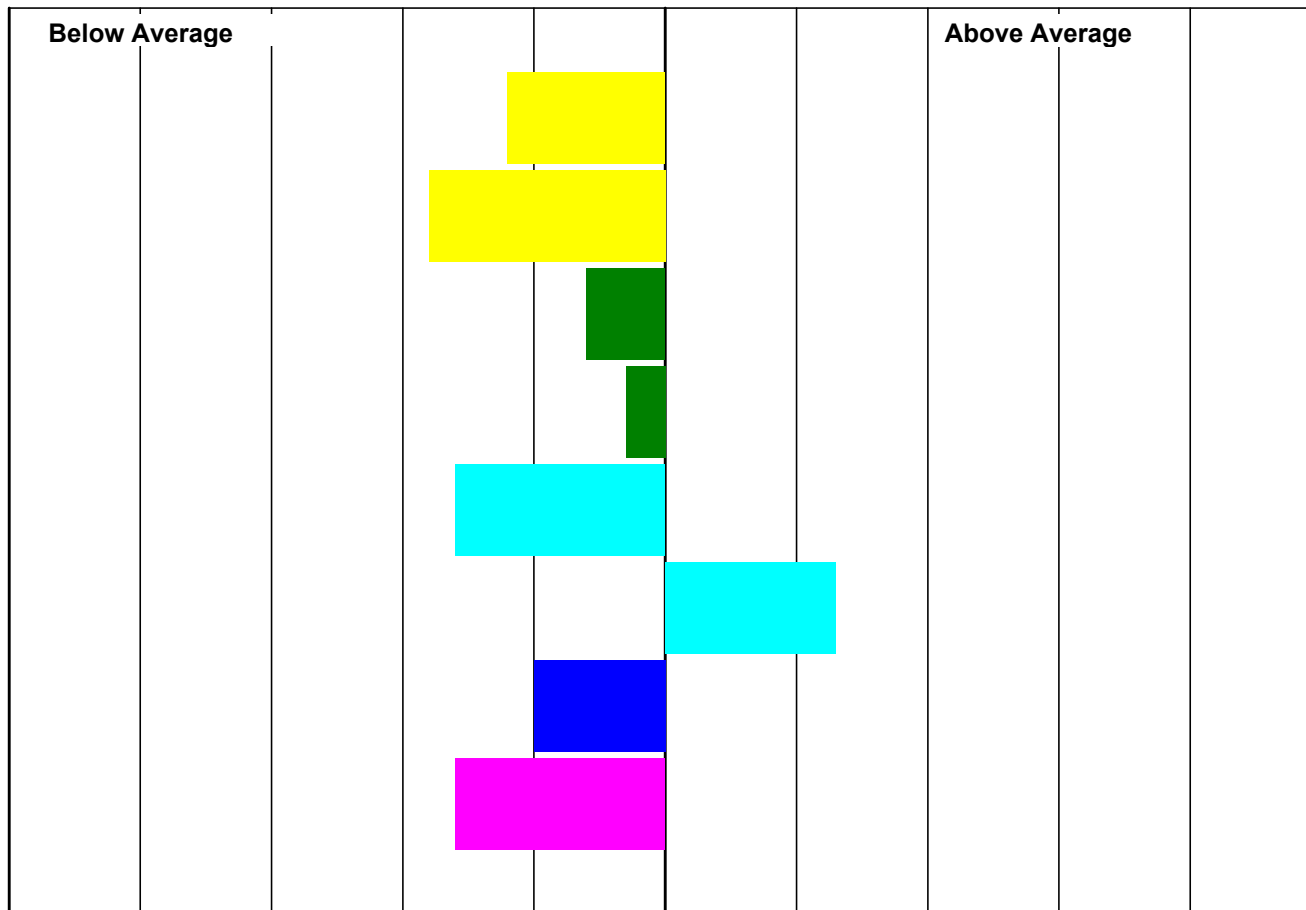
Lot:105 HALLHILL 35N:13:068

Sire: ORANMORE MCCLINTON 88J:12:009

Dam: 35N:K71

Ultrasound Scanned: Yes

Date of Birth 05/01/2013



	EBV	Acc
Litter Size	0.02	32
Mat' Ability	-0.30	30
8 Week Wt	3.29	68
Scan Wt	6.27	70
Muscle Depth	0.05	70
Fat Depth	-0.24	71
T. Sire Index	£1.09	67
Maternal Index	81	44

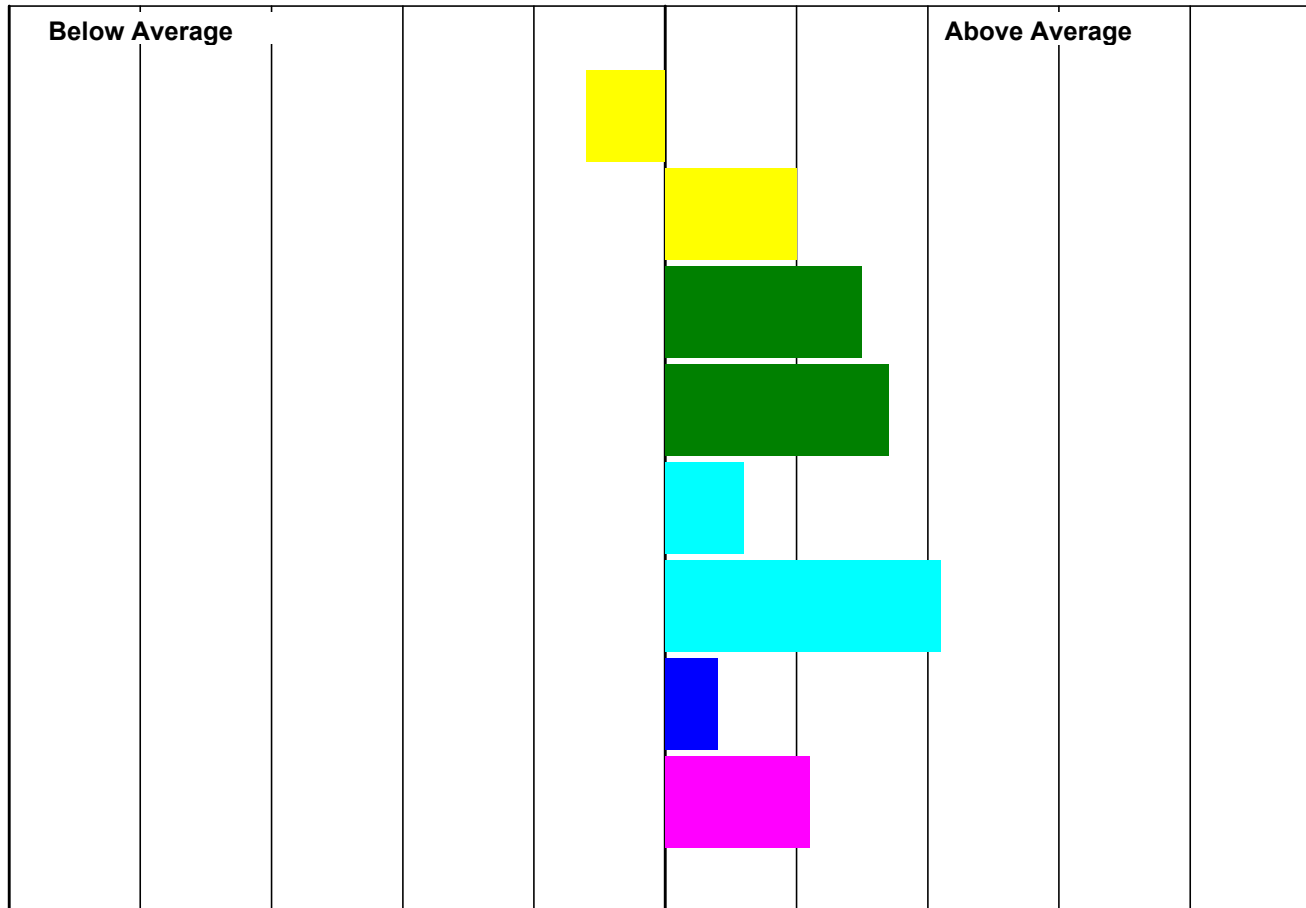
Lot:106 HALLHILL 35N:13:057

Sire: CAIRNESS HOY 33H:12:062

Dam: 35N:11:102

Ultrasound Scanned: Yes

Date of Birth 05/01/2013



	EBV	Acc
Litter Size	0.04	28
Mat' Ability	0.40	26
8 Week Wt	5.38	67
Scan Wt	10.11	69
Muscle Depth	2.16	69
Fat Depth	-0.44	71
T. Sire Index	£2.27	66
Maternal Index	178	44

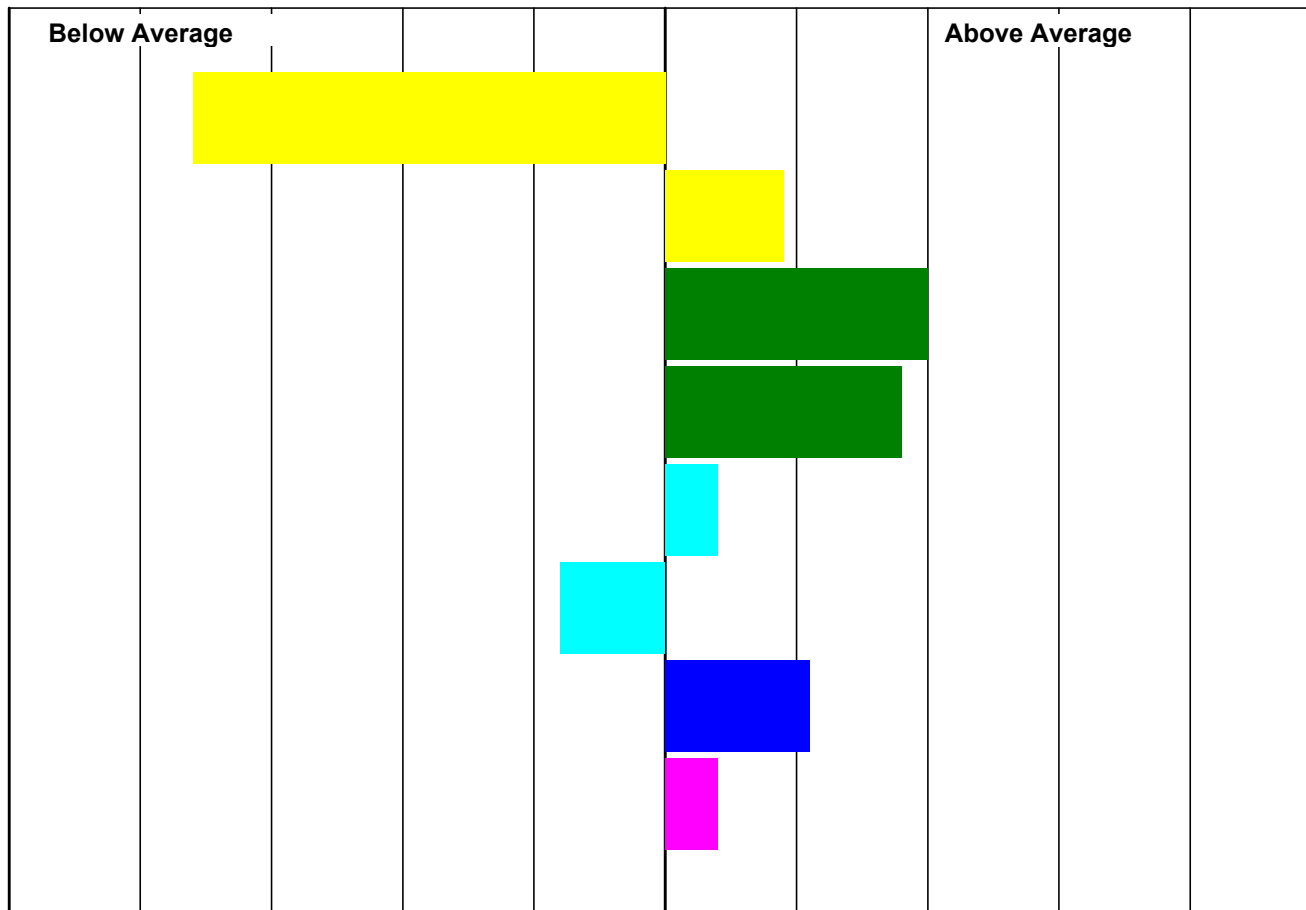
Lot:107 BURNVIEW T86:13:094

Sire: CAIRNESS SAPPHIRE 33H:12:021

Dam: T86:K142

Ultrasound Scanned: Yes

Date of Birth 03/01/2013



	EBV	Acc
Litter Size	-0.06	33
Mat' Ability	0.37	28
8 Week Wt	5.82	64
Scan Wt	10.16	67
Muscle Depth	1.98	67
Fat Depth	0.30	69
T. Sire Index	£2.97	63
Maternal Index	151	39

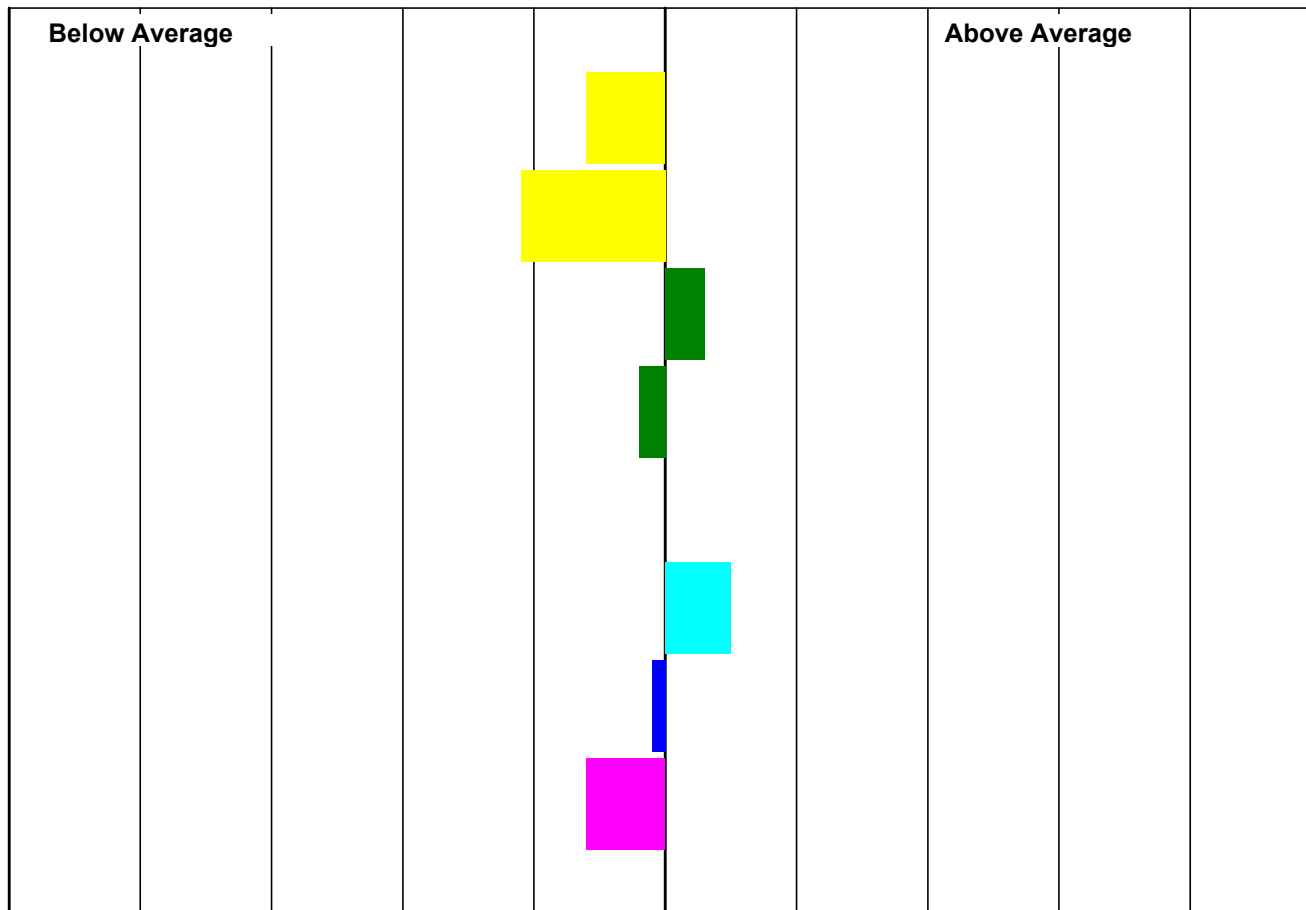
Lot:108 BURNVIEW T86:13:070

Sire: CAIRNESS LIAM 33H:L55

Dam: T86:K9

Ultrasound Scanned: Yes

Date of Birth 02/01/2013



	EBV	Acc
Litter Size	0.04	35
Mat' Ability	-0.10	33
8 Week Wt	4.15	68
Scan Wt	6.51	70
Muscle Depth	1.61	71
Fat Depth	-0.04	72
T. Sire Index	£1.87	67
Maternal Index	116	54

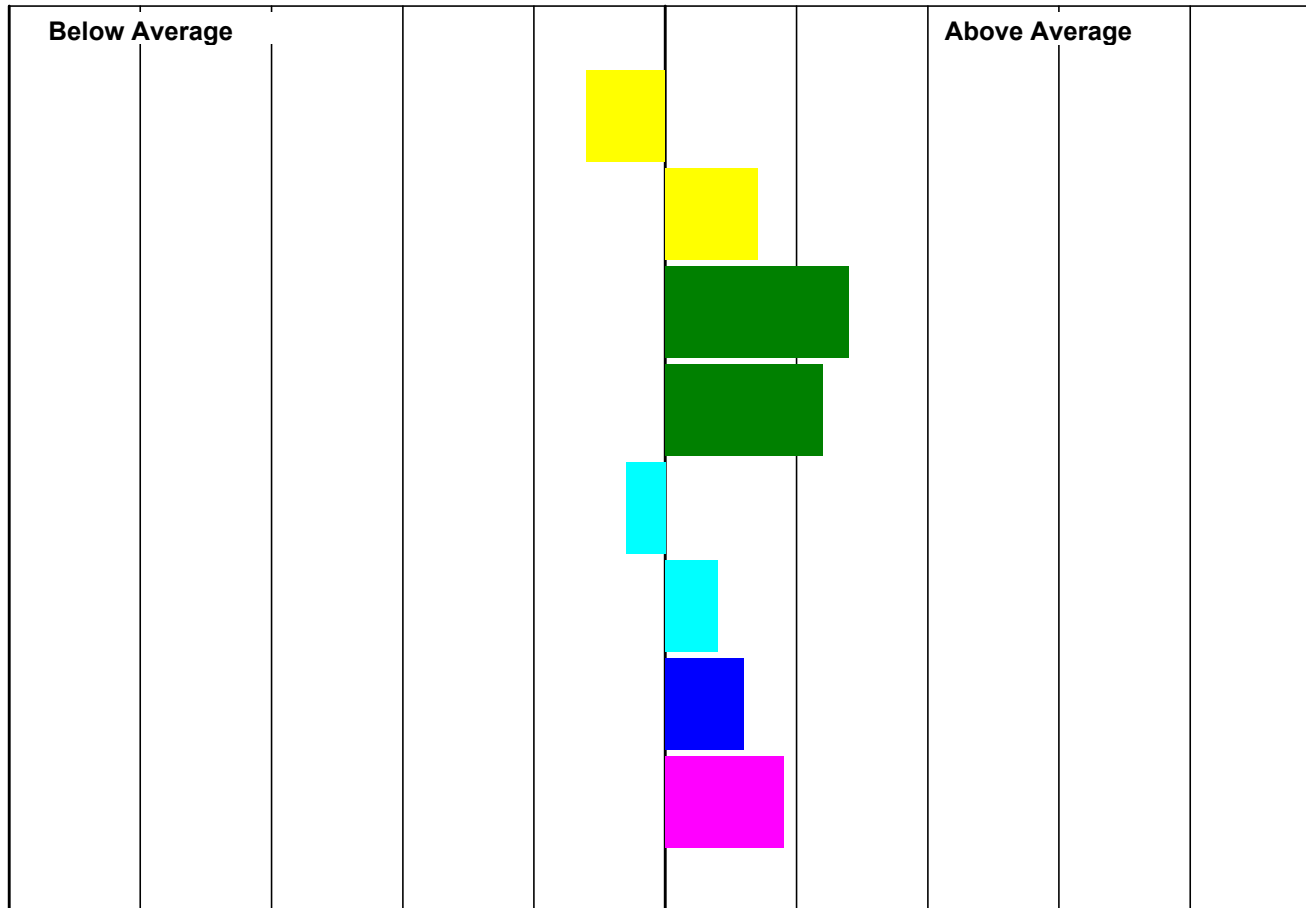
Lot:109 BURNVIEW T86:13:078

Sire: CAIRNESS LIAM 33H:L55

Dam: T86:K18

Ultrasound Scanned: Yes

Date of Birth 02/01/2013



	EBV	Acc
Litter Size	0.04	37
Mat' Ability	0.33	36
8 Week Wt	5.27	71
Scan Wt	9.07	73
Muscle Depth	1.31	73
Fat Depth	0.00	74
T. Sire Index	£2.48	70
Maternal Index	169	56

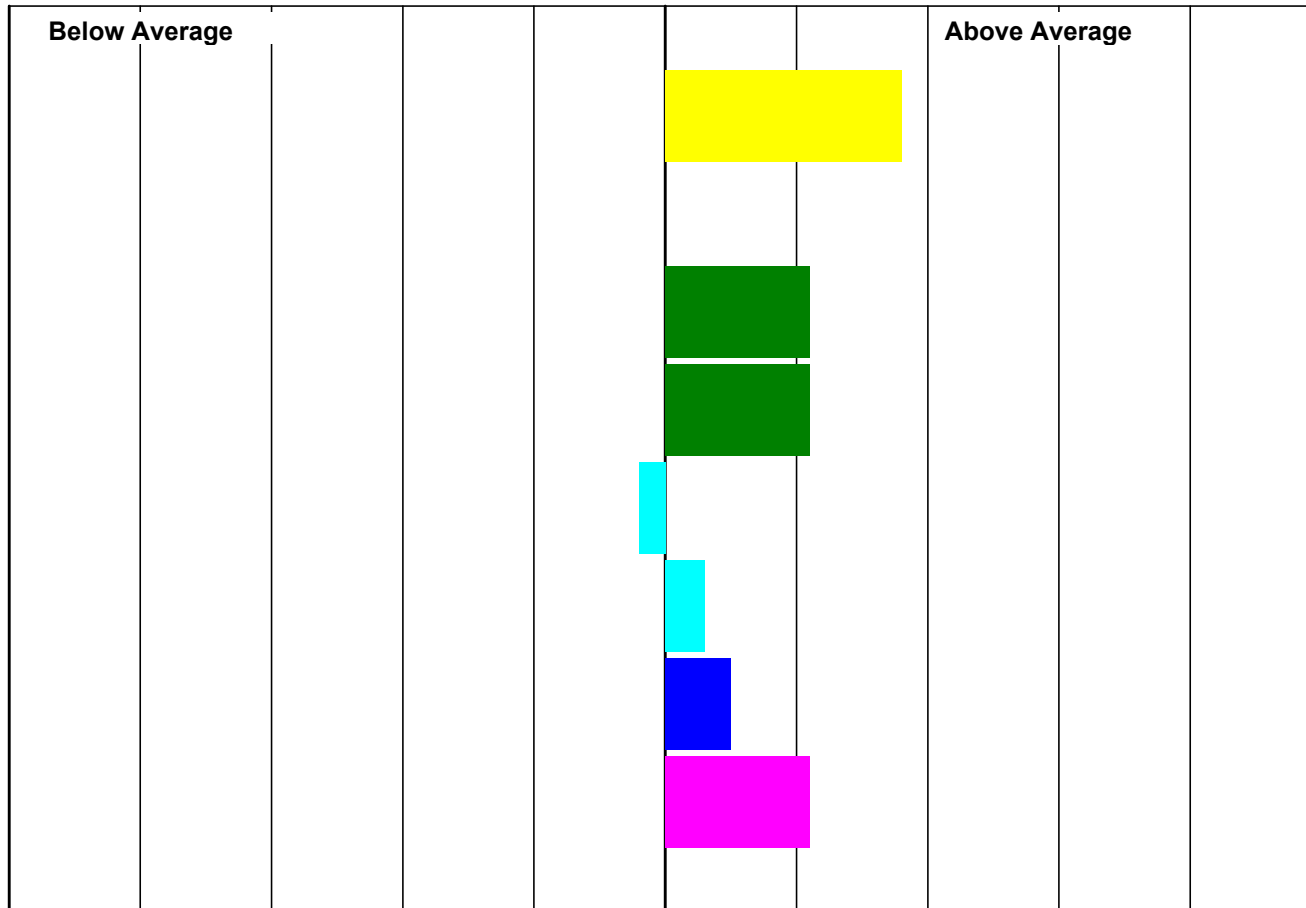
Lot:110 BURNVIEW T86:13:048

Sire: CAIRNESS SAPPHIRE 33H:12:021

Dam: T86:N45

Ultrasound Scanned: Yes

Date of Birth 01/01/2013



	EBV	Acc
Litter Size	0.12	29
Mat' Ability	0.15	28
8 Week Wt	4.96	66
Scan Wt	9.01	69
Muscle Depth	1.39	69
Fat Depth	0.01	71
T. Sire Index	£2.39	65
Maternal Index	179	39

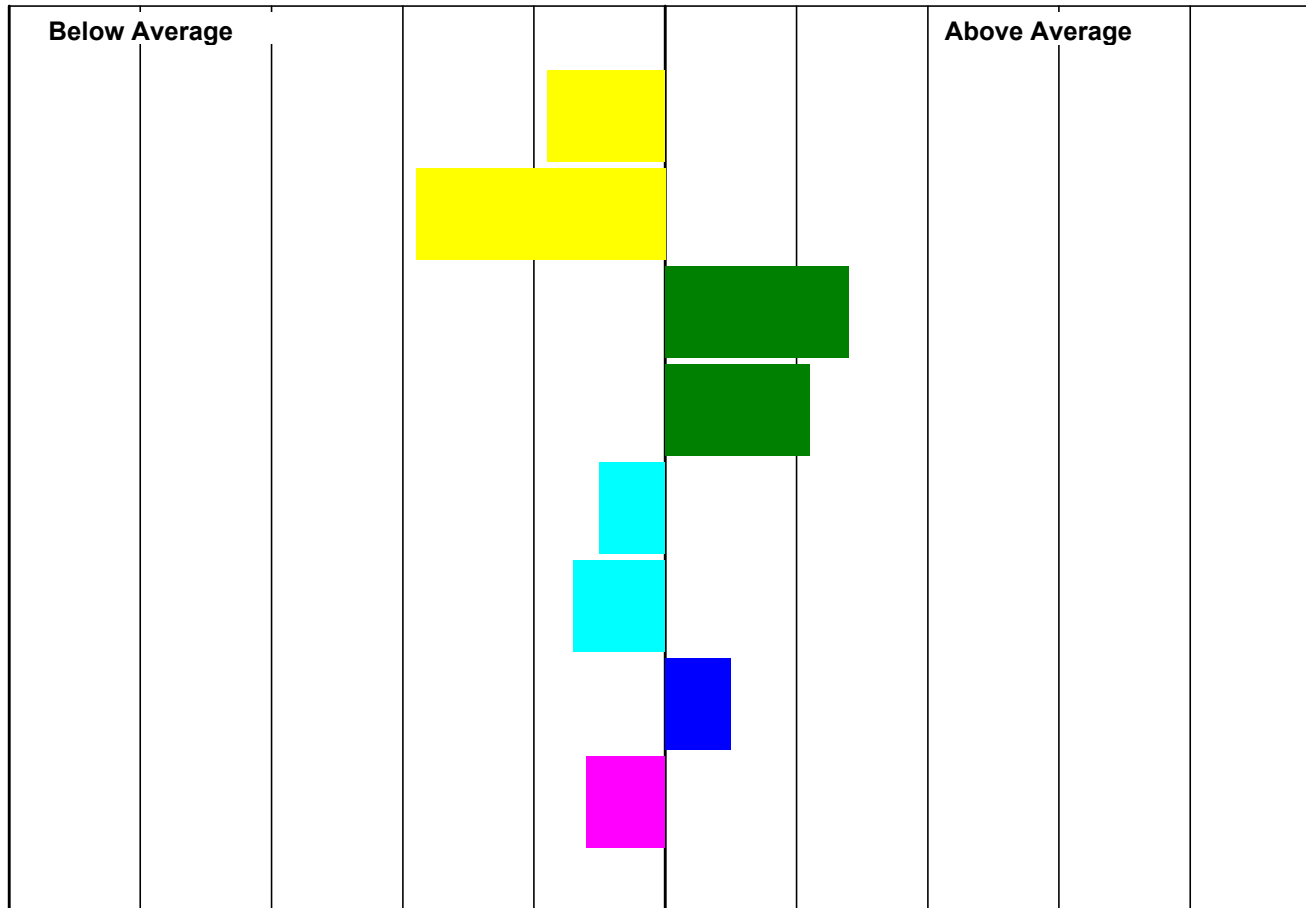
Lot:111 BURNVIEW T86:13:067

Sire: CAIRNESS LIAM 33H:L55

Dam: T86:K147

Ultrasound Scanned: Yes

Date of Birth 02/01/2013



	EBV	Acc
Litter Size	0.03	35
Mat' Ability	-0.30	33
8 Week Wt	5.25	69
Scan Wt	8.98	71
Muscle Depth	1.13	71
Fat Depth	0.27	73
T. Sire Index	£2.41	68
Maternal Index	116	54

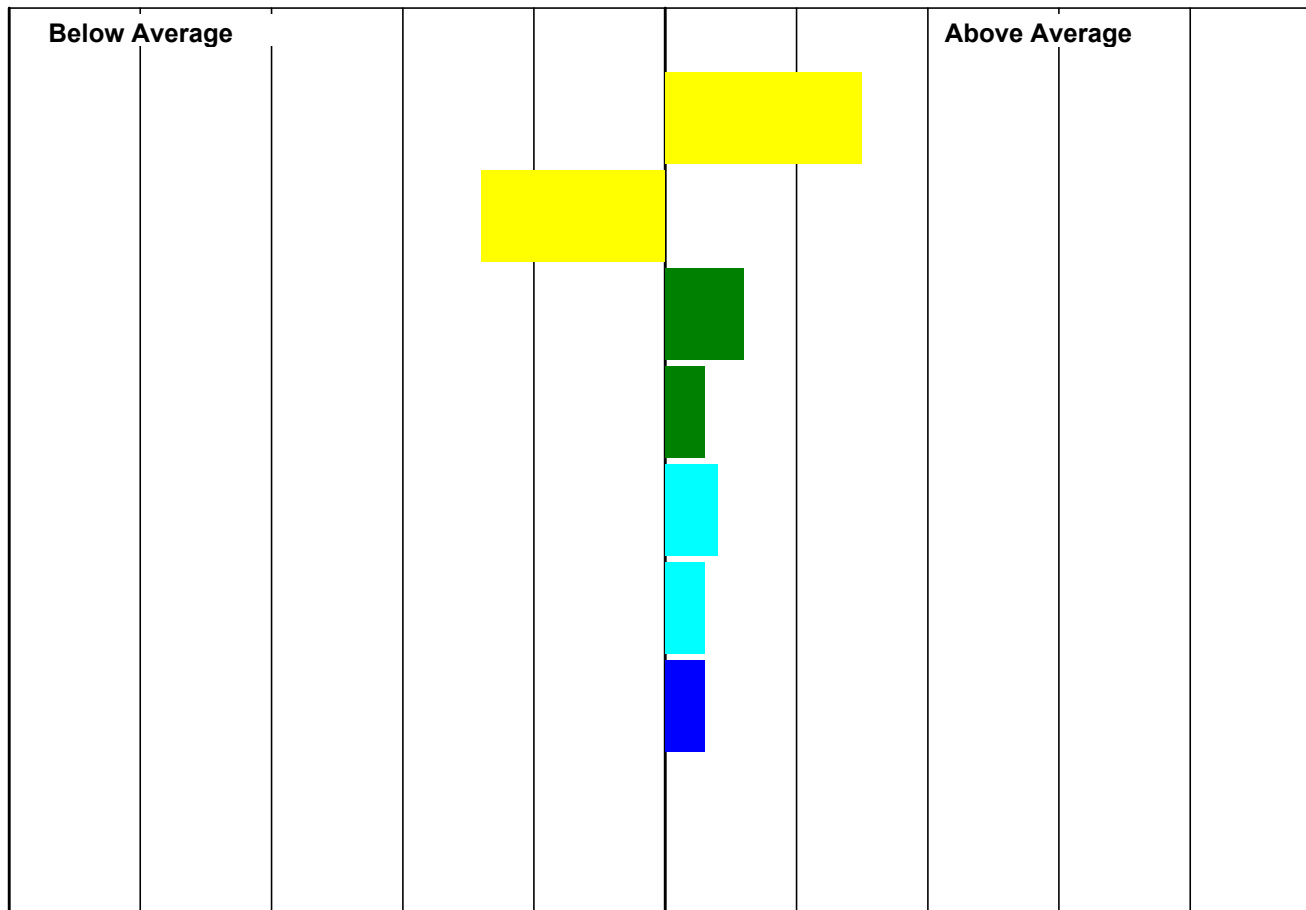
Lot:112 BURNVIEW T86:13:065

Sire: FORKINS FERRARI II AOR:N17

Dam: T86:L63

Ultrasound Scanned: Yes

Date of Birth 02/01/2013



	EBV	Acc
Litter Size	0.11	41
Mat' Ability	-0.20	40
8 Week Wt	4.49	71
Scan Wt	7.45	72
Muscle Depth	1.95	73
Fat Depth	0.02	74
T. Sire Index	£2.22	70
Maternal Index	137	56

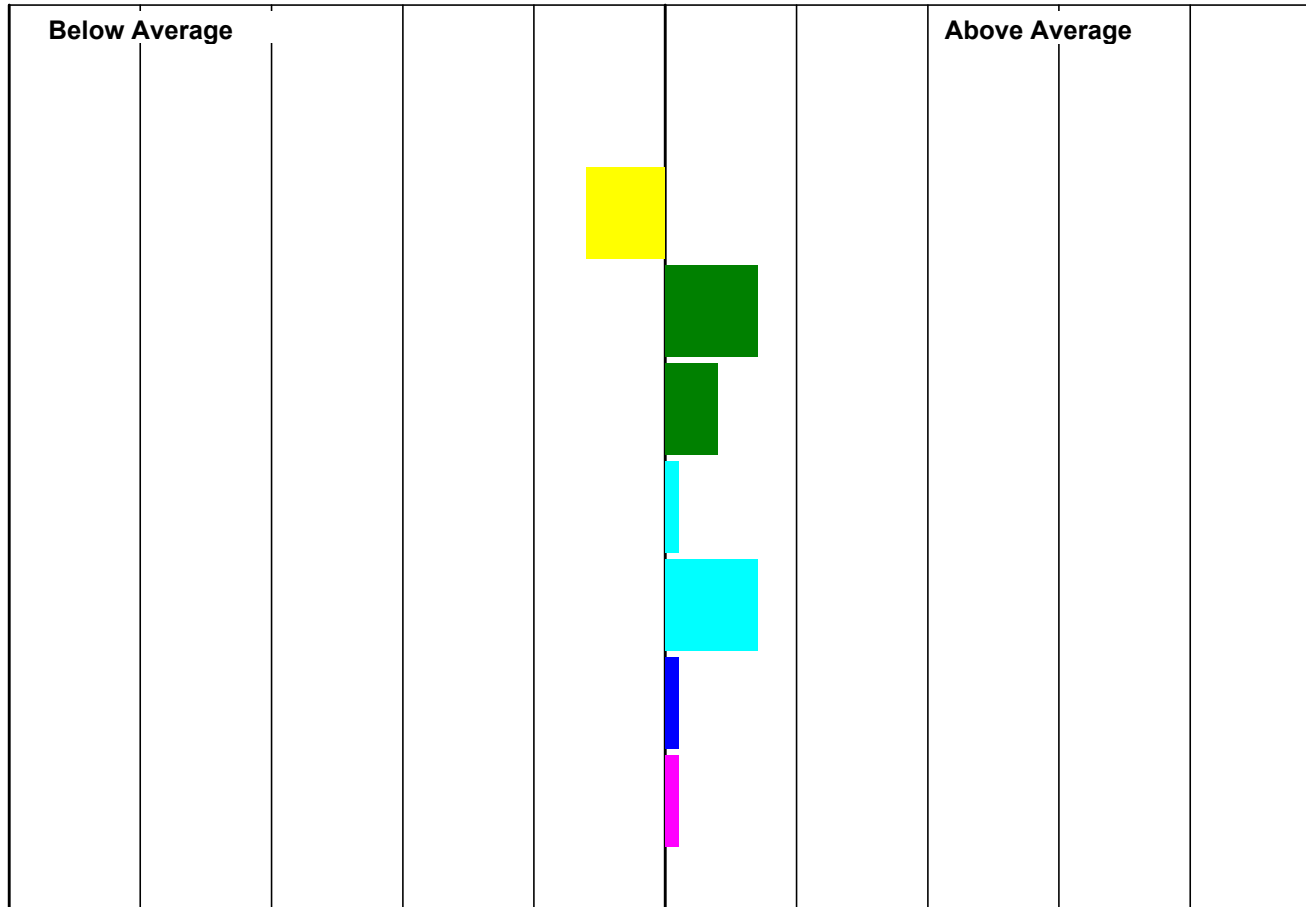
Lot:113 BURNVIEW T86:13:003

Sire: CAIRNESS LIAM 33H:L55

Dam: T86:11:066

Ultrasound Scanned: Yes

Date of Birth 28/12/2012



	EBV	Acc
Litter Size	0.06	32
Mat' Ability	0.00	31
8 Week Wt	4.56	67
Scan Wt	7.62	70
Muscle Depth	1.65	70
Fat Depth	-0.09	72
T. Sire Index	£2.07	67
Maternal Index	140	52

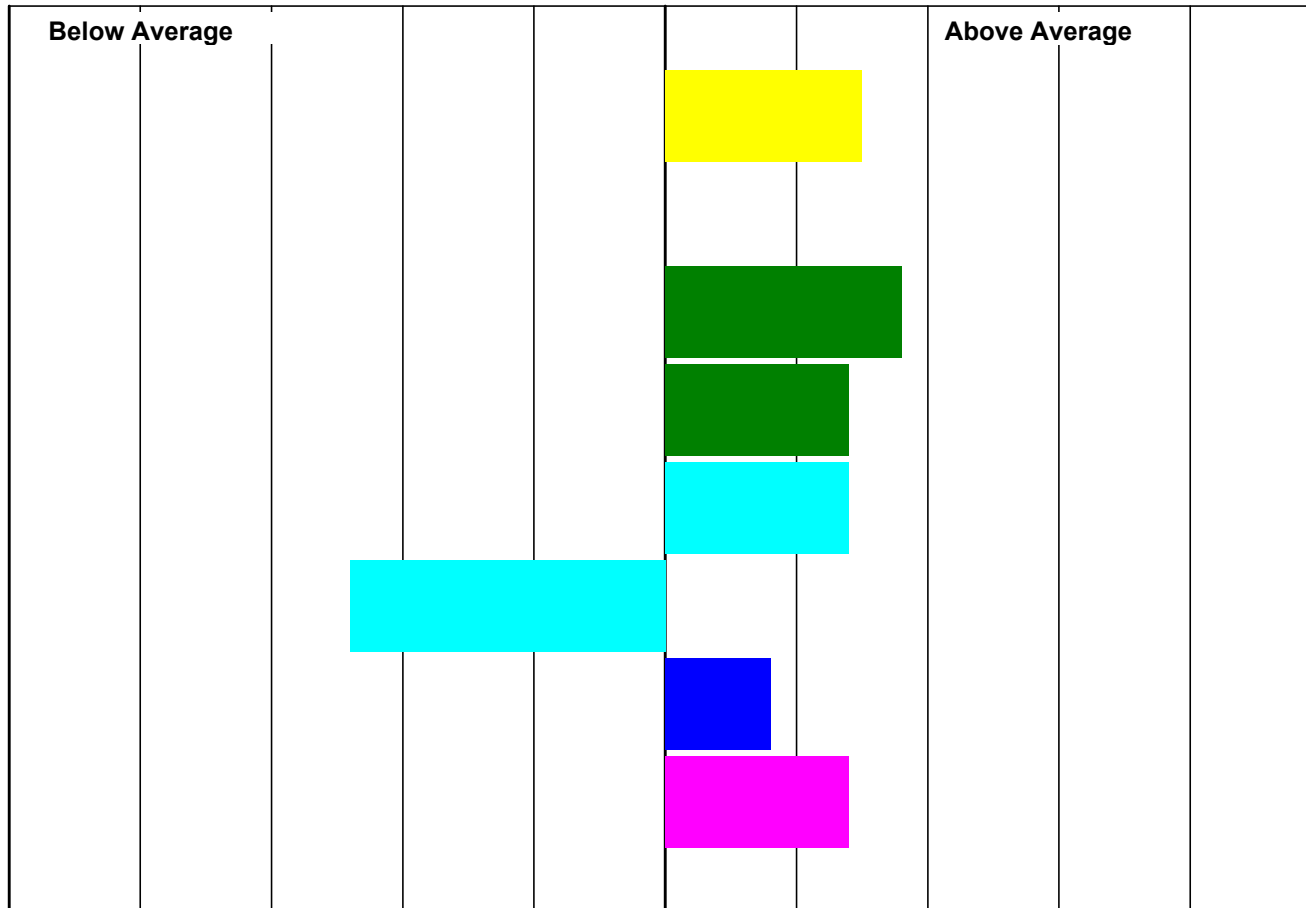
Lot:125 BROMPTON M17:13:034

Sire: CAIRNESS LIAM 33H:L55

Dam: LOD:K37

Ultrasound Scanned: Yes

Date of Birth 26/12/2012



	EBV	Acc
Litter Size	0.11	34
Mat' Ability	0.15	30
8 Week Wt	5.71	68
Scan Wt	9.44	70
Muscle Depth	2.96	70
Fat Depth	0.72	72
T. Sire Index	£2.68	67
Maternal Index	188	53

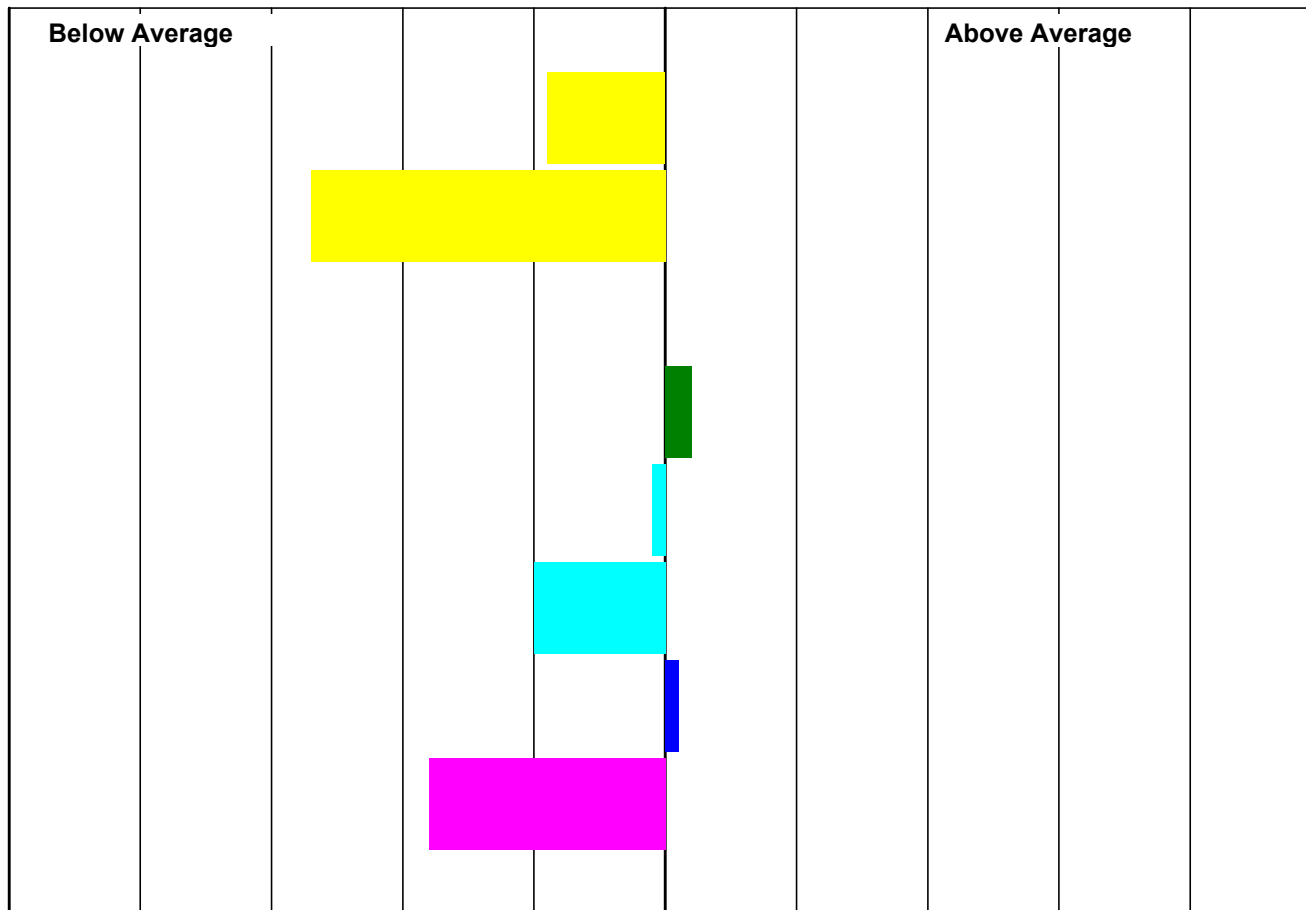
Lot:126 BROMPTON M17:13:014

Sire: CAIRNESS KAISER CHIEF 33H:F10

Dam: M17:11:069

Ultrasound Scanned: Yes

Date of Birth 26/12/2012



	EBV	Acc
Litter Size	0.03	34
Mat' Ability	-0.50	31
8 Week Wt	3.89	62
Scan Wt	7.33	65
Muscle Depth	1.51	65
Fat Depth	0.35	67
T. Sire Index	£2.03	61
Maternal Index	75	39

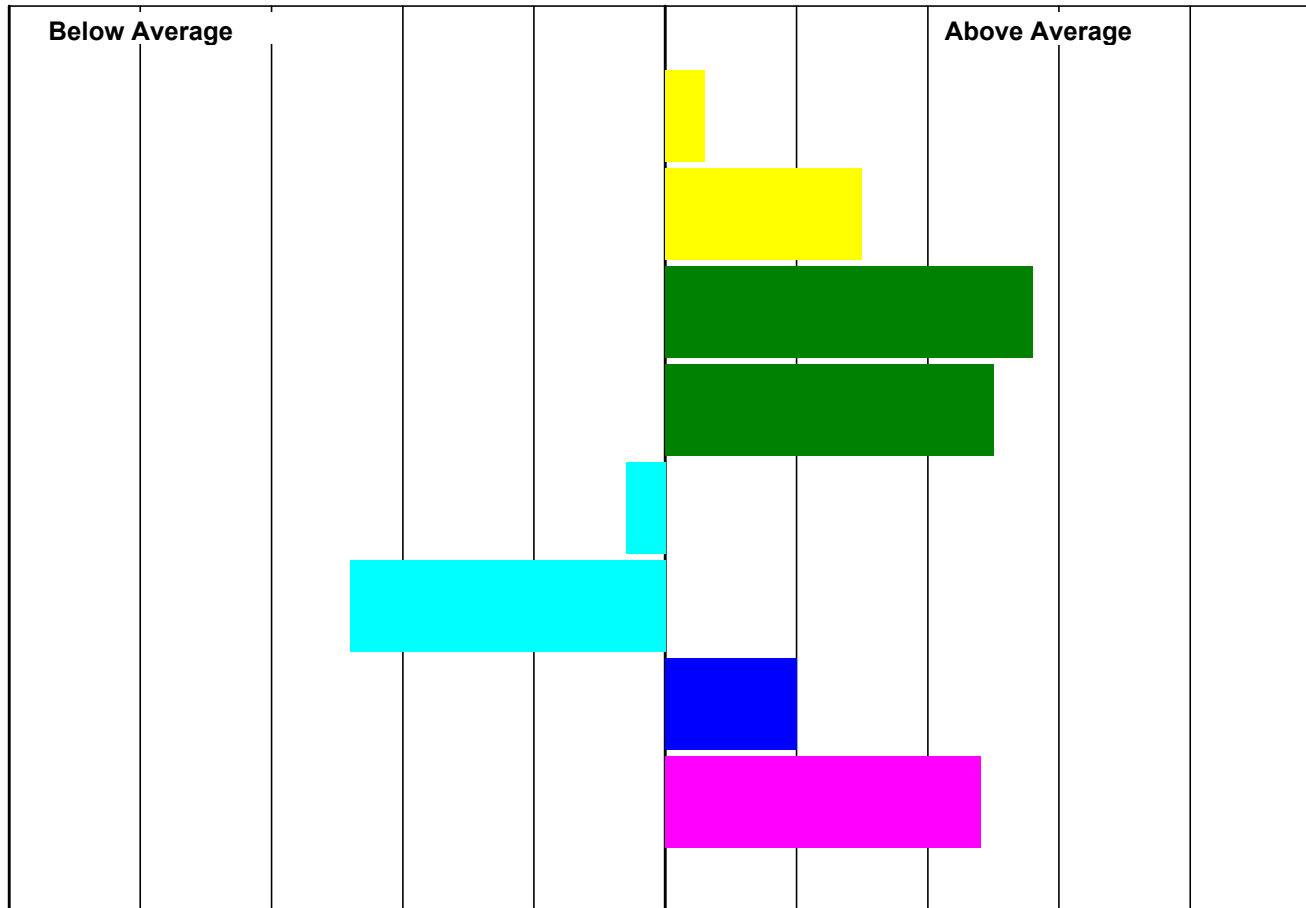
Lot:127 BROMPTON M17:13:017

Sire: ROOKERY ROONEY DND:11:003

Dam: M17:11:024

Ultrasound Scanned: Yes

Date of Birth 26/12/2012



	EBV	Acc
Litter Size	0.07	34
Mat' Ability	0.54	32
8 Week Wt	6.66	64
Scan Wt	11.50	66
Muscle Depth	1.35	66
Fat Depth	0.71	68
T. Sire Index	£2.84	63
Maternal Index	223	45

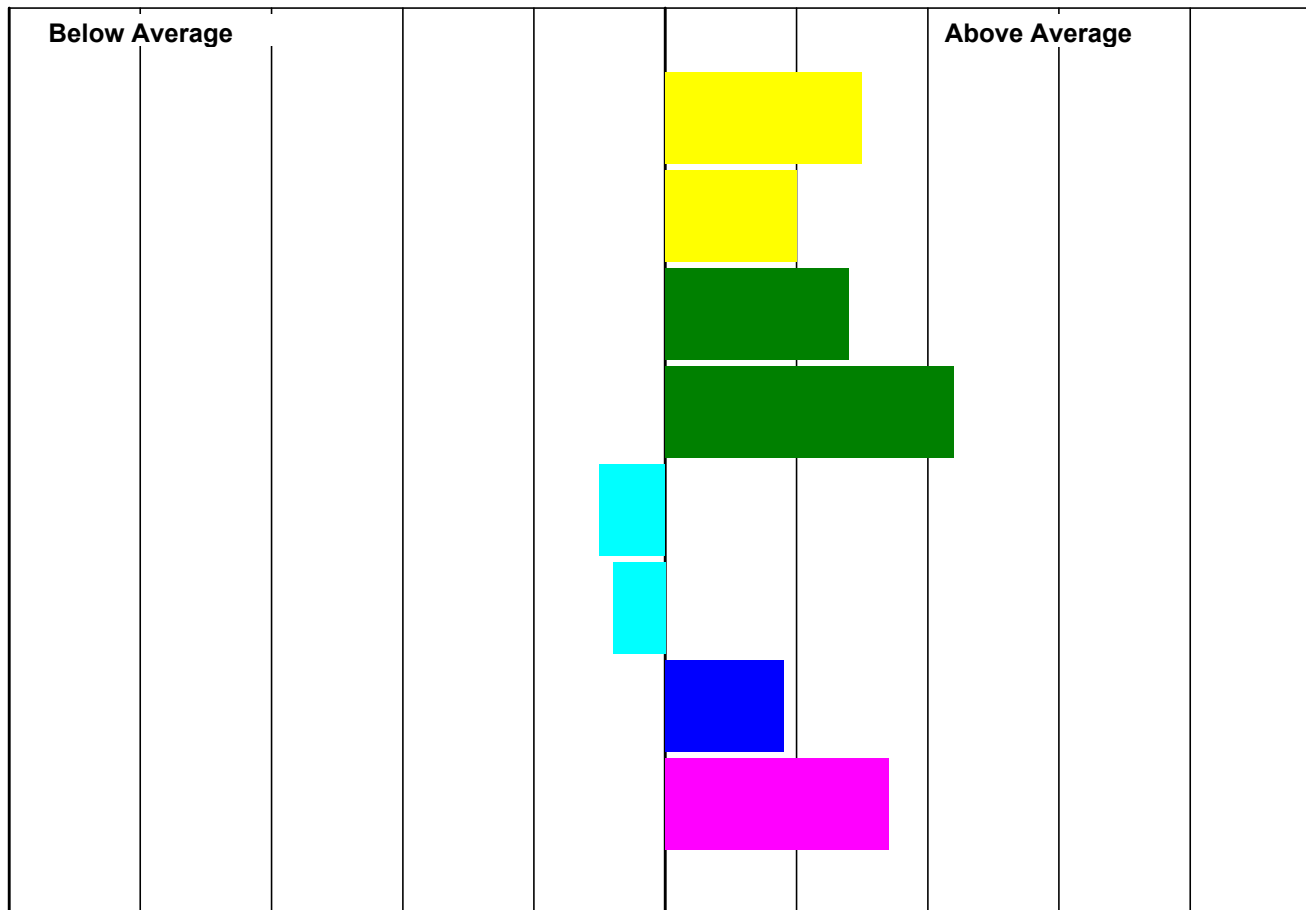
Lot:128 BROMPTON M17:13:046

Sire: CAIRNTON THE CRACKER KLR:12:027

Dam: DYH:J138

Ultrasound Scanned: Yes

Date of Birth 01/01/2013



	EBV	Acc
Litter Size	0.11	35
Mat' Ability	0.40	33
8 Week Wt	5.27	64
Scan Wt	10.95	66
Muscle Depth	1.11	66
Fat Depth	0.20	67
T. Sire Index	£2.78	62
Maternal Index	200	40

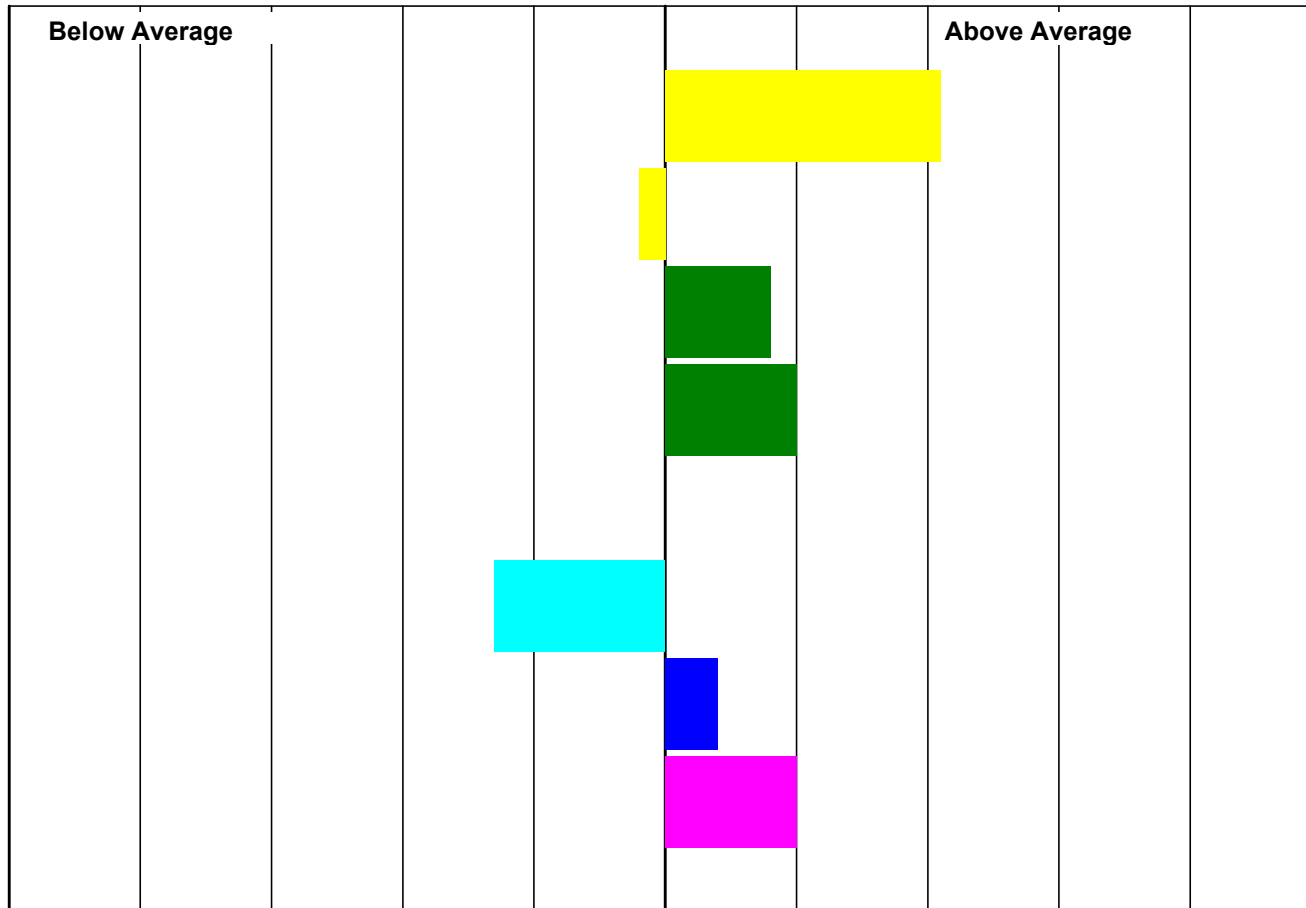
Lot:138 SLACKADALE 16U:13:008

Sire: HARPERCROFT HUMDINGER 249:11:051

Dam: 16U:L12

Ultrasound Scanned: Yes

Date of Birth 05/01/2013



	EBV	Acc
Litter Size	0.13	34
Mat' Ability	0.09	31
8 Week Wt	4.73	66
Scan Wt	8.77	69
Muscle Depth	1.62	69
Fat Depth	0.43	70
T. Sire Index	£2.30	65
Maternal Index	173	41

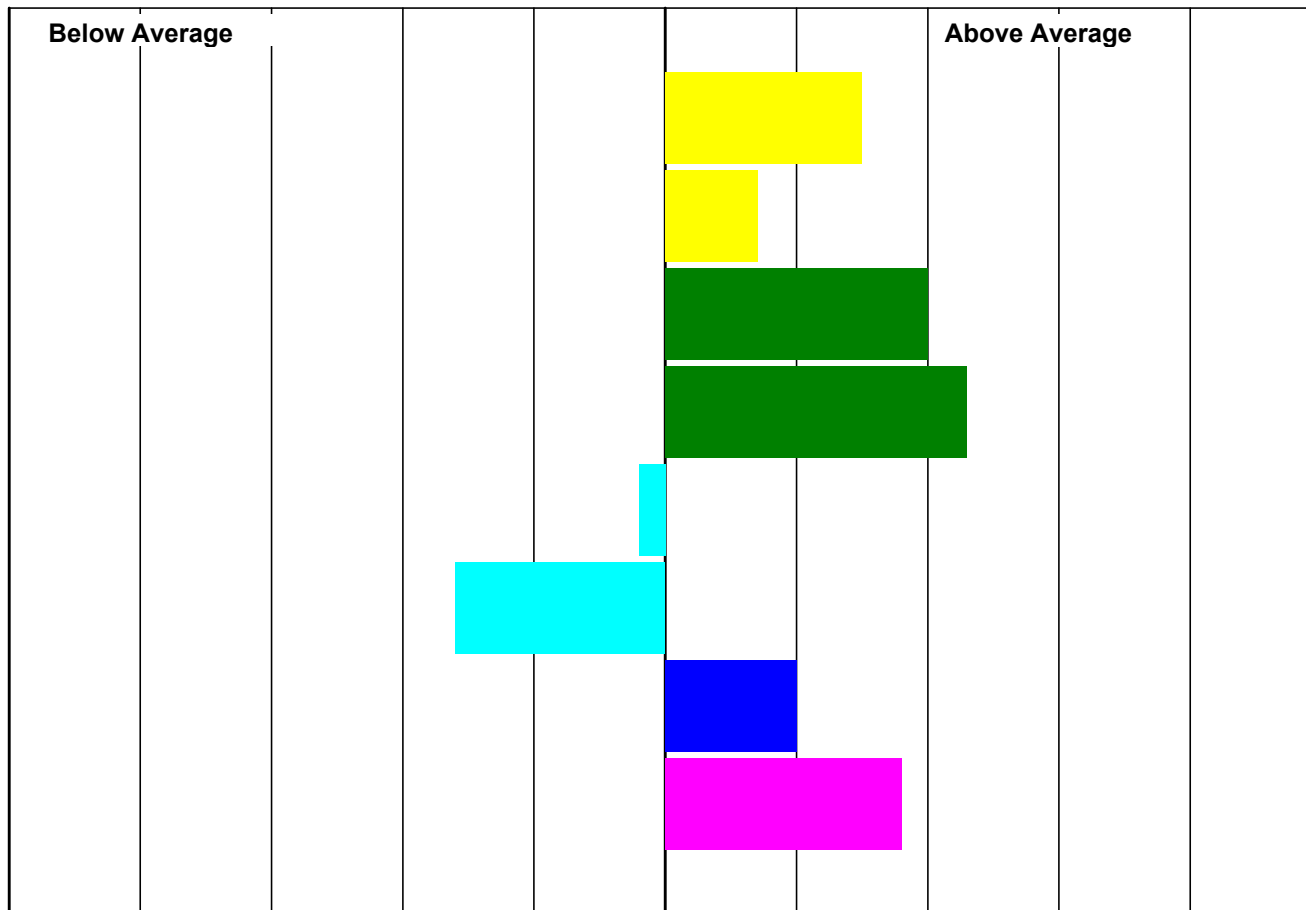
Lot:139 SLACKADALE 16U:13:016

Sire: HARPERCROFT HUMDINGER 249:11:051

Dam: 16U:11:012

Ultrasound Scanned: Yes

Date of Birth 10/01/2013



	EBV	Acc
Litter Size	0.11	30
Mat' Ability	0.33	28
8 Week Wt	5.88	66
Scan Wt	11.19	68
Muscle Depth	1.45	68
Fat Depth	0.51	70
T. Sire Index	£2.87	65
Maternal Index	204	39

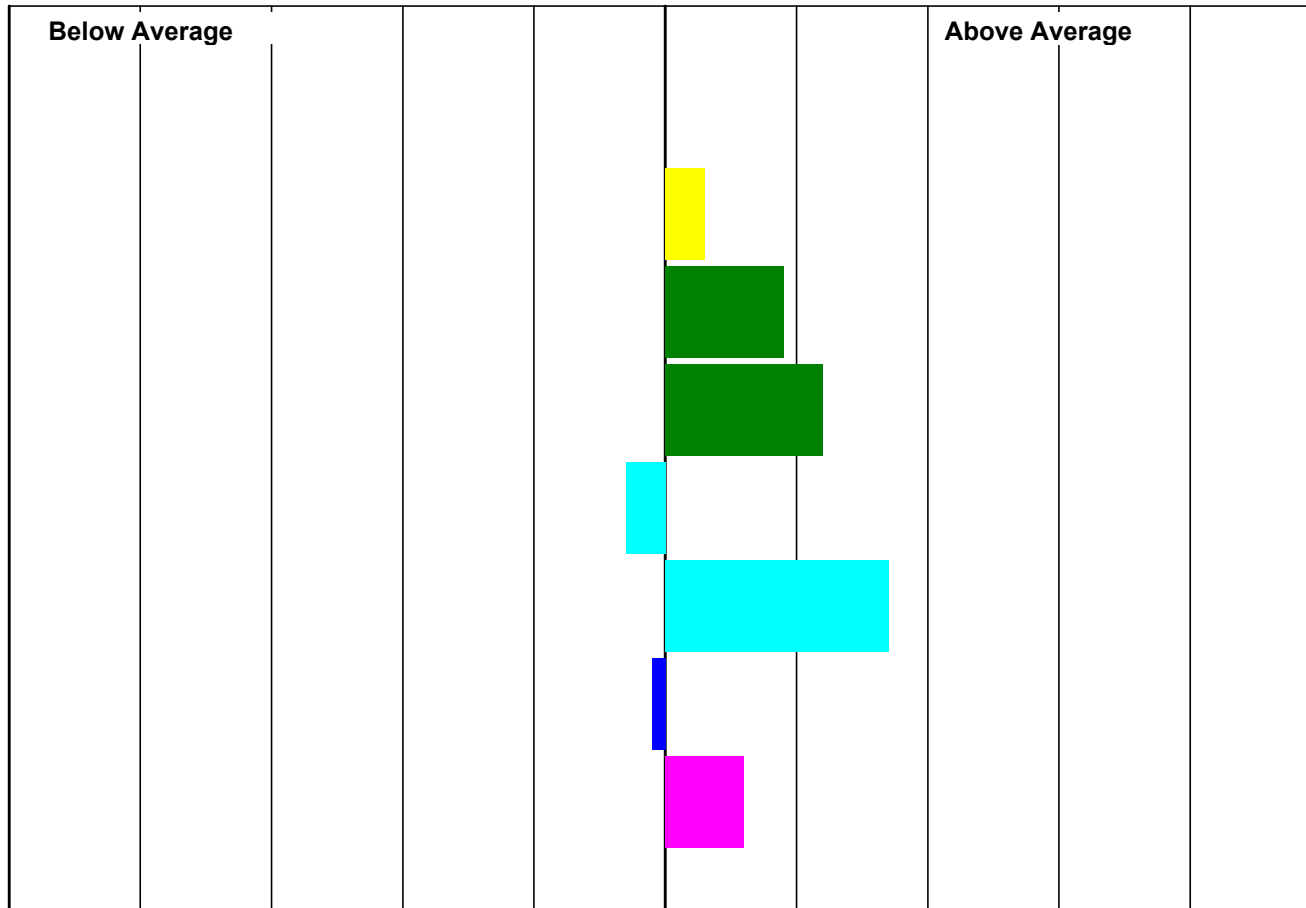
Lot:140 SLACKADALE 16U:13:032

Sire: HARPERCROFT HUMDINGER 249:11:051

Dam: 16U:N27

Ultrasound Scanned: Yes

Date of Birth 18/01/2013



	EBV	Acc
Litter Size	0.06	32
Mat' Ability	0.21	29
8 Week Wt	4.83	66
Scan Wt	9.07	68
Muscle Depth	1.32	68
Fat Depth	-0.34	70
T. Sire Index	£1.90	65
Maternal Index	161	40